

# WEBSHUTTLE II

**ISDN**

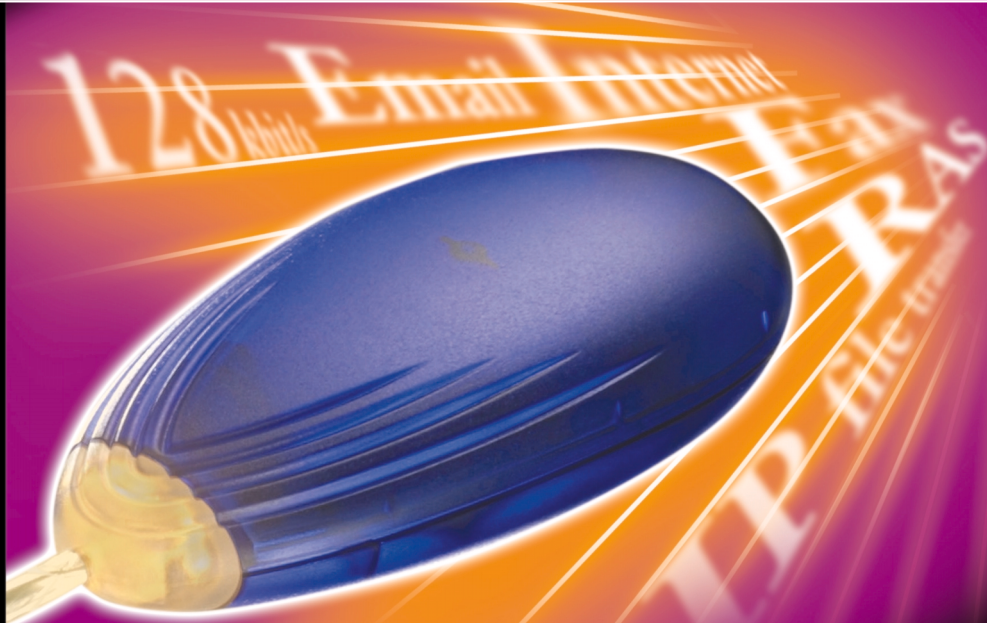
*Internet Highspeed*

**128** kbit/s

Mac**M**osh  
Macintosh®

**HERMSTEDT**  
Communication Products

*Communication is our business!*



W  
Windows®

# ISDN

ISDN

Internet Highspeed **128** kbit/s

**Fax**



**E-Mail**



**Internet**



**IP-Filetransfer**

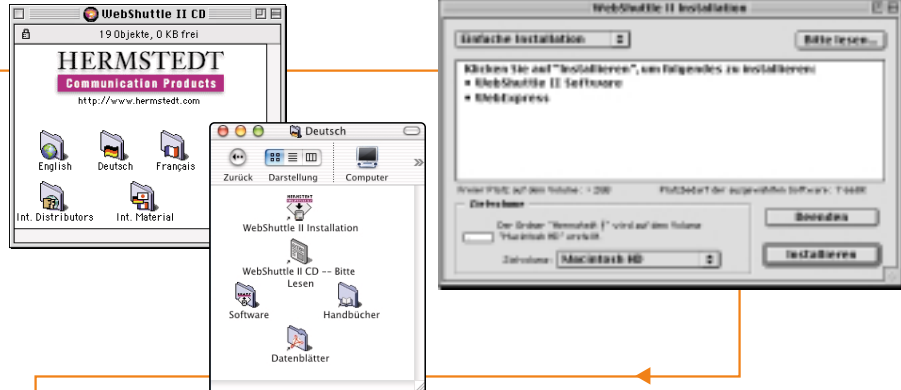


- **ISDN-Adapter für USB-Schnittstelle – kein Netzteil erforderlich**
- **Internet Highspeed 128 kbit/s**
- **All-in-One-Gerät für Internet, E-Mail, Fax, IP-Filetransfer und Remote Access**
- **Intelligente Verwaltung ein- und ausgehender Anrufe (Call Bumping)**
- **Ideal für Notebooks, PowerBooks und portablen Einsatz**
- **Modernes platzsparendes Design**
- **Ansprechende Statusanzeige der ISDN-Leitung**
- **Einfache und schnelle Installation**
- **Unterstützt Windows und Macintosh**

## I.

### Softwareinstallation

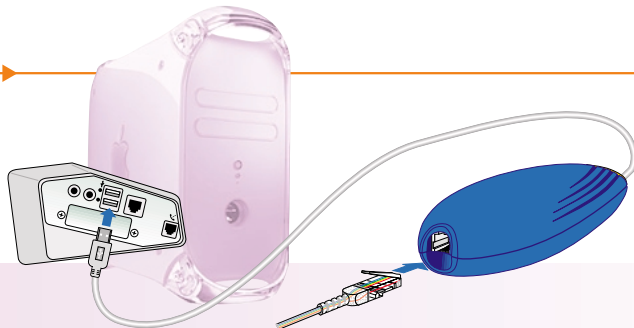
- ▶ Legen Sie die WEBSHUTTLE II CD ein.
- ▶ Öffnen Sie das Installationsprogramm.  
Die einfache Installation installiert alles, was benötigt wird.



## 2.

### WEBSHUTTLE II anschließen

- ▶ Schließen Sie das USB-Kabel an Ihren Macintosh an.
- ▶ Verbinden Sie das WEBSHUTTLE II mit dem ISDN-Anschluss mittels des gelieferten ISDN-Kabels.



# ISDN

## ISDN

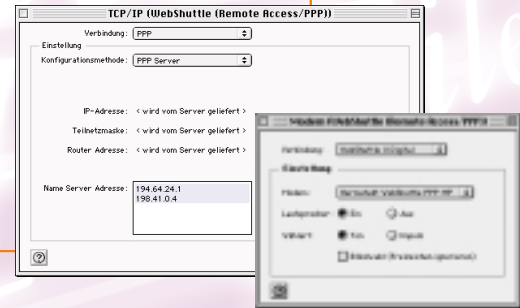
3.

Internet-Zugang unter Mac OS 8.5 oder neuer einrichten

► Wählen Sie Ihren Internet-Anbieter

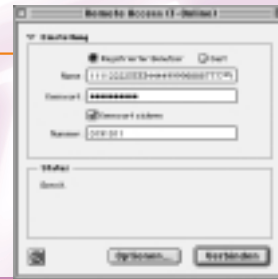
### Internet-Anbieter / T-Online

- Vom WEBSHUTTLE II Installer wurden nun bereits konfiguriert:
  - im Kontrollfeld „TCP/IP“: als Verbindung „PPP“ und als Konfigurationsmethode „PPP Server“,
  - im Kontrollfeld „Modem“: „WebShuttle II digital“ und als Modem „Hermstedt WebShuttle PPP MP“.



### Internet-Anbieter

- Im Kontrollfeld „Remote Access“ geben Sie Telefonnummer, Ihre Benutzererkennung und das Kennwort in die Felder „Nummer“, „Name“ und „Kennwort“ ein.
- Klicken Sie „Verbinden“.



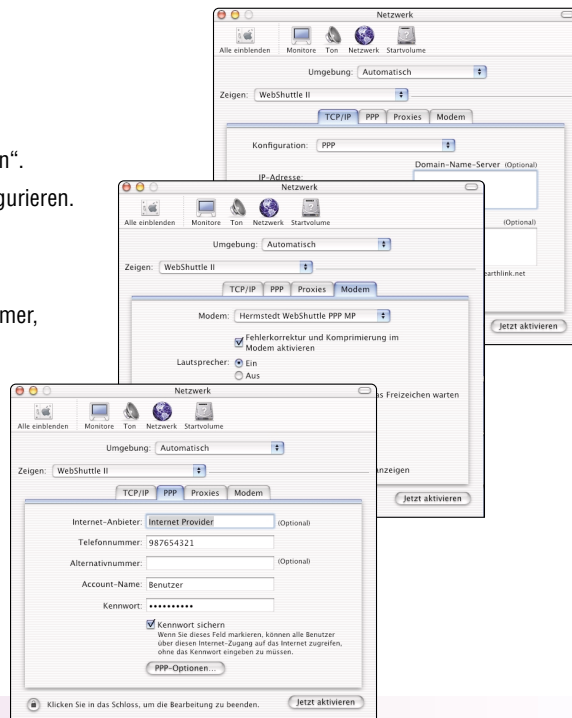
### T-Online

- Im Kontrollfeld „Remote Access“ geben Sie Anschlusskennung, das Zeichen „#“ und Ihre Mitbenutzernummer (üblicherweise „1“) in „Name“ ein.
- Geben Sie Ihr Kennwort und die Nummer ein, und klicken Sie „Verbinden“.

3.

## Internet-Zugang unter Mac OS X einrichten

- ▶ Wählen Sie „Netzwerk“ unter „Systemeinstellungen“ aus.
- ▶ Unter „Zeigen“ wählen Sie „Aktive Netzwerk-Anschlüsse“ aus.
- ▶ Aktivieren Sie „WebShuttle II“ in der Liste „Anschluss-Konfigurationen“.
- ▶ Unter „Zeigen“ können Sie jetzt „WebShuttle II“ auswählen und konfigurieren.
  - Unter „TCP/IP“: als Konfiguration „PPP“.
  - Unter „Modem“: als Modem „Hermstedt WebShuttle PPP MP“.
  - Unter „PPP“ geben Sie Internet-Anbieter-Bezeichnung, Telefonnummer, Account-Name und Kennwort in die entsprechenden Felder ein.
  - Bei den PPP-Optionen kreuzen Sie „Beim Zugriff auf TCP/IP automatisch verbinden“ und klicken Sie OK.
- ▶ Klicken Sie „Jetzt aktivieren“.



# ISDN

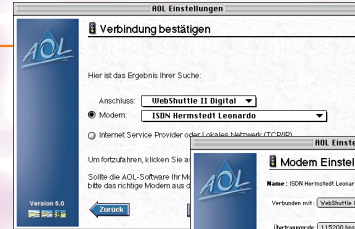
## ISDN

3.

**Wählen Sie Ihren Internet-Anbieter**

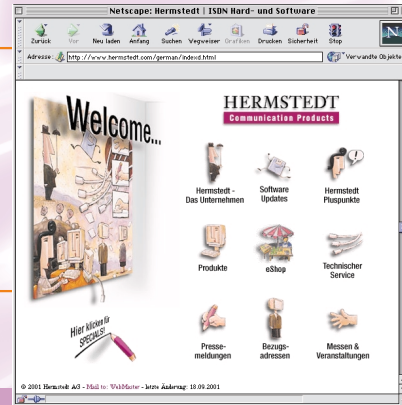
**AOL (America Online)**

- ▶ Klicken Sie im Programm „AOL“ im „Willkommen“-Fenster in „Einstellungen“:
- ▶ Wählen Sie als Anschluss „WebShuttle II Digital“ als Typ „ISDN Hermstedt Leonardo“.
- ▶ Klicken Sie „Sichern“ und dann „Anmelden“.



4

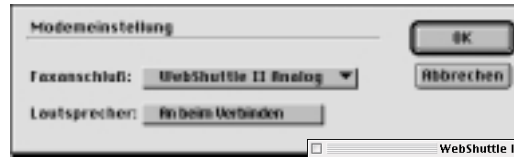
**Internet Browser starten**



5.

## Fax senden und empfangen

- ▶ Im WEBSHUTTLE II Kontrollfeld konfigurieren Sie die analogen Verbindungen.
- ▶ In Ihrer bevorzugten Fax-Anwendung wählen Sie als Modem-Anschluss „WebShuttle II analog“ aus.



6.

## Dokumentation

- ▶ Weitere Informationen finden Sie in unseren Handbüchern im Acrobat PDF Format auf der WEBSHUTTLE II CD.



7.

## Kostenlose Updates unter

[www.hermstedt.com](http://www.hermstedt.com)

[www.hermstedt.com](http://www.hermstedt.com)

# ISDN

Internet Highspeed **128** kbit/s

**Fax**



**Email**



**Internet**



**IP file transfer**



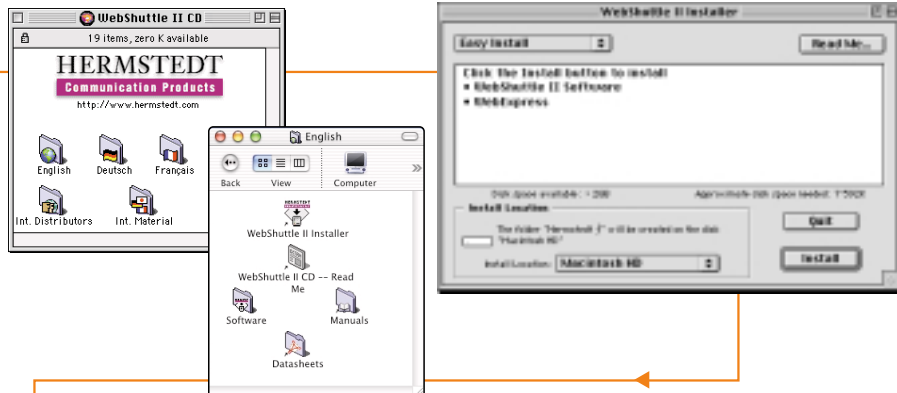
- **ISDN adapter for USB interface - no external power supply required**
- **128 kbit/s highspeed Internet**
- **All-in-one device for Internet, email, fax, IP file transfer and remote access**
- **Intelligent management of incoming and outgoing calls (Call Bumping)**
- **Ideal for notebooks, PowerBooks and mobile usage**
- **Modern, compact design**
- **Informative indication of ISDN line status**
- **Simple and quick installation**
- **Supports Windows and Macintosh**



## I.

### Software installation

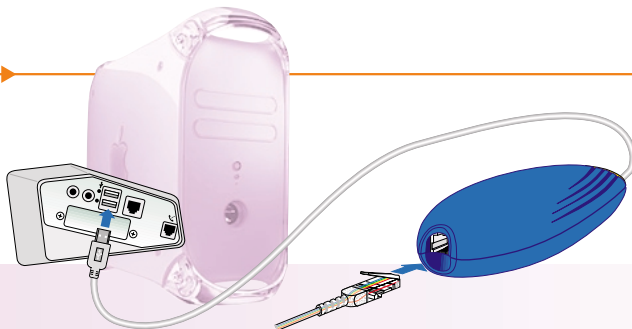
- ▶ Place the WEBSHUTTLE CD in your CD drive.
- ▶ Open the installation programme. This simple programme will automatically install all required files.



## 2.

### Connect your WEBSHUTTLE II

- ▶ Plug the USB cable into your Macintosh.
- ▶ Plug the ISDN cable into your WEBSHUTTLE II and the other end into your ISDN wall outlet.



# ISDN

## ISDN

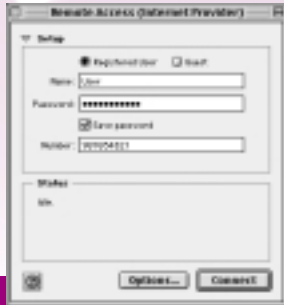
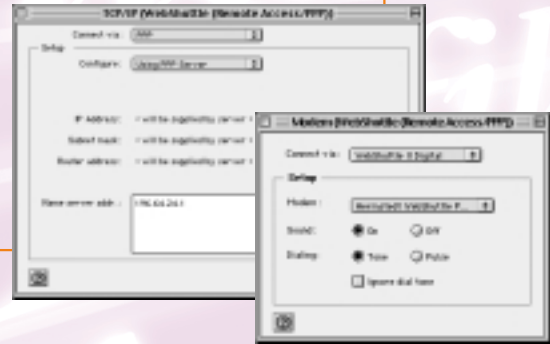
3.

Configure your Internet connection under Mac OS 8.5 or newer

▶ Choose your Internet service provider

### Internet Service Provider

- ▶ The WEBSHUTTLE II installer has already completed the following configuration:
  - in the Control Panel “TCP/IP”: “PPP” for the connection and “PPP Server” for the configuration,
  - in the Control Panel “Modem”: “WebShuttle II Digital” for the line and “Hermstedt WebShuttle PPP” for the modem.



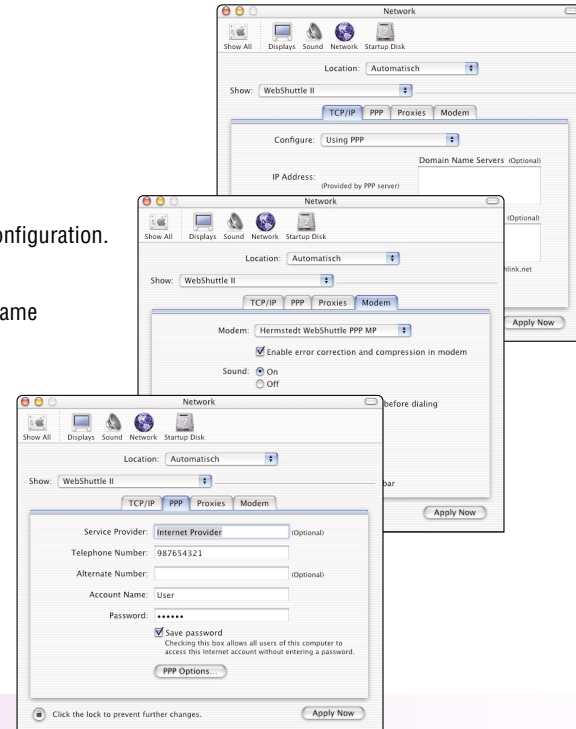
▶ In the control panel “Remote Access” enter the ISDN number and your user name and password for your internet connection in the fields marked “Number”, “Name” and “Password”.

▶ Click on “Connect”.

3.

## Configure your Internet connection under Mac OS X

- ▶ Choose “Network” in System Preferences.
- ▶ Choose “Active Network Port” in “Show”.
- ▶ Activate “WebShuttle II” in the list “Ports configurations”.
- ▶ Choose now and configure “WebShuttle II” in “Show”.
  - In “TCP/IP”: “PPP” for the connection and “Using PPP” for the configuration.
  - In “Modem”: “Hermstedt WebShuttle PPP MP” for the modem.
  - In “PPP” enter your ISP’s name, its ISDN number and your username and password in the appropriate fields.
  - In PPP Options select “Connect automatically when starting TCP/IP applications” and click OK.
- ▶ Click on “Apple now”.



# ISDN

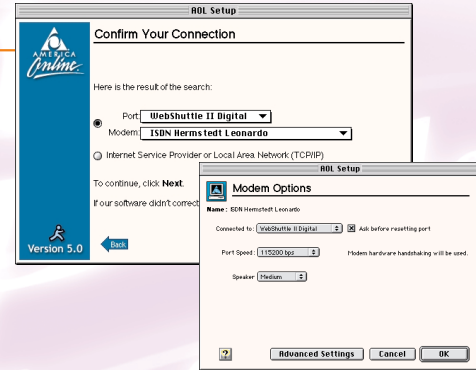
## ISDN

3.

### Choose your Internet service provider

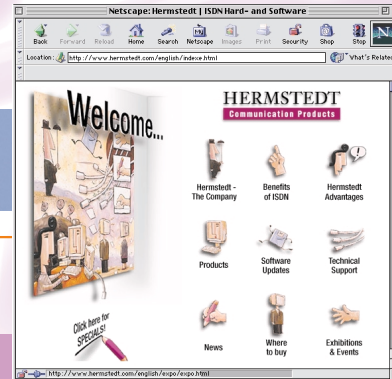
#### AOL (America Online)

- ▶ Click on the application “AOL” in the “Welcome” window in “Configuration”.
- ▶ Choose the “Port” “WebShuttle II Digital” and the type “ISDN Hermstedt Leonardo”.
- ▶ Click on “Save” and then “Sign on”.



4

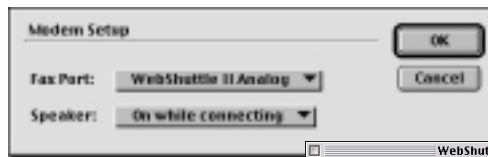
### Start your www-Browser



5.

## Sending and receiving faxes

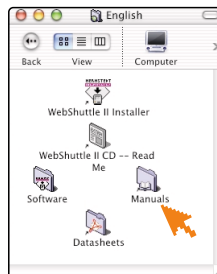
- ▶ Configure the analogue connection in the WebSHUTTLE II Control Panel.
- ▶ In your preferred fax application under "Modem connection", select "WebShuttle II analogue".



6.

## Documentation

- ▶ For further information consult our user manual, which can be found on the WebSHUTTLE II CD as an Acrobat PDF file.



7.

## Free updates under

[www.hermstedt.com](http://www.hermstedt.com)

[www.hermstedt.com](http://www.hermstedt.com)

# RNIS

RNIS

Internet haut débit

128 kbit/s

**Télécopie**



**E-mail**



**Internet**



**Transfert IP**

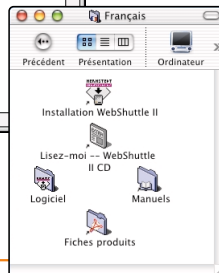
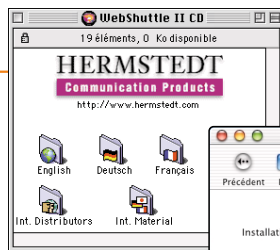


- *Adaptateur RNIS pour port USB – aucune alimentation externe requise*
- *Internet haut débit 128 kbit/s*
- *Adaptateur tout en un pour Internet, courrier électronique, télécopie, transfert de fichiers sur IP et accès distant*
- *Gestion intelligente des appels entrants et sortants (Call Bumping)*
- *Idéal pour notebooks, PowerBooks et autres portables*
- *Design moderne et compact*
- *Affichage clair de l'état de la ligne RNIS*
- *Installation simple et rapide*
- *Pour Windows et Macintosh*

## I.

### Installez le logiciel

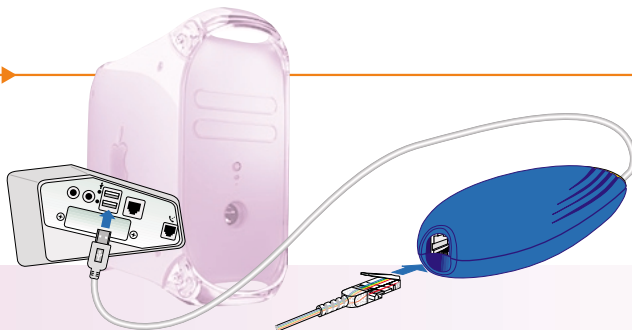
- ▶ Insérez le CD ROM WEBSHUTTLE II CD dans le lecteur de CD ROM.
- ▶ Lancez le programme d'installation. L'installation standard installe tout ce dont vous avez besoin pour naviguer sur Internet.



## 2.

### Connectez votre WebSHUTTLE II

- ▶ Branchez le câble USB à votre Macintosh.
- ▶ Reliez votre WebSHUTTLE II à la ligne RNIS par le biais du câble RNIS livré en standard.

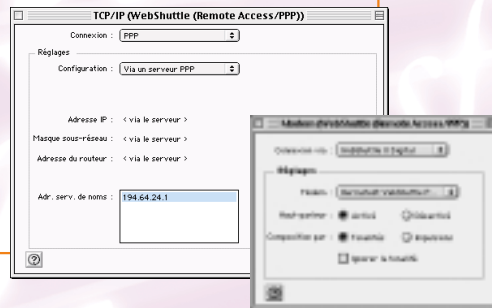


3.

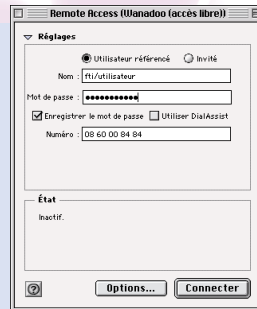
Configurez l'accès Internet sous Mac OS 8.5 ou ultérieur ▶ Sélectionnez votre fournisseur d'accès Internet

### Fournisseur d'accès Internet / Wanadoo

- ▶ Le programme d'installation de WEBSHUTTLE II a déjà procédé aux configurations suivantes :
  - dans le tableau de bord « TCP/IP » : « PPP » pour la connexion et « Via un serveur PPP » pour la configuration,
  - dans le tableau de bord « Modem » : « WebShuttle II Digital » pour la connexion et « Hermstedt WebShuttle PPP MP » pour le modem.



- ▶ Dans le tableau de bord « Remote Access » entrez le numéro de téléphone, vos nom et mot de passe dans les champs « Numéro », « Nom » et « Mot de passe ».
- ▶ Cliquez sur « Connecter ».

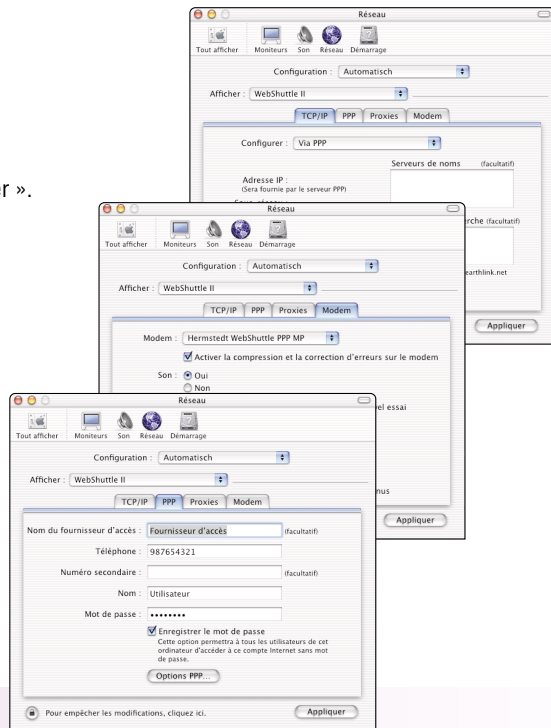




3.

## Configurez l'accès Internet sous Mac OS X

- ▶ Sélectionnez « Réseau » dans les préférences système.
- ▶ Sélectionnez « Ports de réseau actifs » dans « Afficher ».
- ▶ Activez « WebShuttle II » dans la liste « Ports et configurations ».
- ▶ Sélectionnez maintenant et configurez « WebShuttle II » dans « Afficher ».
  - Sous l'onglet « TCP/IP » : « Via PPP » sous « Configurer ».
  - Sous l'onglet « Modem » : « Hermostedt WebShuttle PPP MP » pour le modem.
  - Sous l'onglet « PPP », entrez le nom de votre fournisseur d'accès, son numéro de téléphone, vos nom et mot de passe dans les champs correspondants.
  - Sous Options PPP, activez « Connexion automatique au lancement d'applications TCP/IP » et cliquez OK.
- ▶ Cliquez « Appliquer ».



# RNIS

## RNIS

3.

Sélectionnez votre fournisseur d'accès Internet

**AOL (America Online)**

- ▶ Cliquez sur « Configuration » dans la fenêtre de bienvenue du programme « AOL ».
- ▶ Sélectionnez « WebShuttle II Digital » dans la case « Port » et « ISDN Hermstedt Leonardo » dans la case « Type ».
- ▶ Cliquez sur « Enregistrer » puis « Connecter ».

Domicile

Lieu

Premier profil :

Mode de connexion : ADSLNet

Numéro de téléphone : 00 36 06 1 3 1 0

Essayer [ ] 0/1 fois

Port : WebShuttle II Digital

Type : RNIS (Hermstedt Leonardo)

Vitesse : 57600 bps

Options :

Mode de connexion : ADSLNet

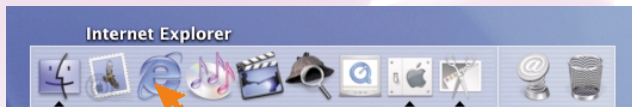
Numéro de téléphone : 00 36 06 1 3 1 0

Essayer [ ] 0/1 fois

Annuler Enregistrer

4

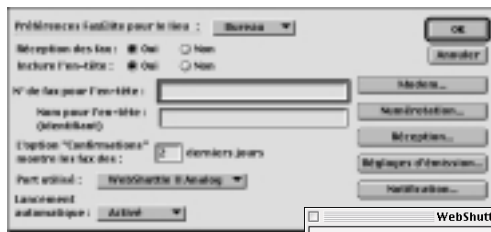
Lancez votre navigateur Internet



5.

## Envoyer et recevoir des télécopies

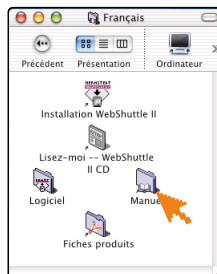
- ▶ Dans le tableau de bord WEBSHUTTLE II, configurez les connexions analogiques.
- ▶ Dans votre application de télécopie préférée, sélectionnez « WebShuttle II analog » dans le champ du port modem.



6.

## Documentation

- ▶ Pour de plus amples informations, veuillez vous reporter aux manuels (format Acrobat PDF) contenus sur le CD ROM de WEBSHUTTLE II.

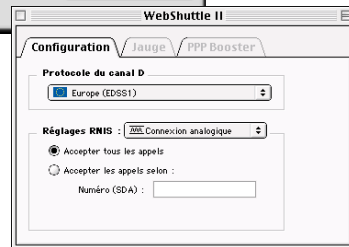


7.

## Mises à jour gratuites sur

[www.hermstedt.com](http://www.hermstedt.com)

[www.hermstedt.com](http://www.hermstedt.com)



# WEBSHUTTLE *II*

# M

Macintosh®

Hermstedt AG • Germany  
Carl-Reuther-Straße 3  
D-68305 Mannheim  
Tel. +49-(0) 621-76 50-0  
Fax +49-(0) 621-76 50-100  
E-Mail: [info@hermstedt.de](mailto:info@hermstedt.de)  
<http://www.hermstedt.com>

Hermstedt • UK  
7 Warwick Court  
London WC1R 5DJ  
Phone +44-(0)207-421 15 00  
Fax +44-(0)207-242 29 04  
Email: [sales@hermstedt.co.uk](mailto:sales@hermstedt.co.uk)  
<http://www.hermstedt.co.uk>

[www.hermstedt.com](http://www.hermstedt.com)

ISDN

USB  
UNIVERSAL SERIAL BUS

# WEBSHUTTLE II

**ISDN**

Internet Highspeed

**128** kbit/s

**W**  
Windows  
Windows®

**HERMSTEDT**  
Communication Products



*Communication is our business!*

**M**

Macintosh®

# ISDN

ISDN

Internet Highspeed **128** kbit/s

**Fax**



**E-Mail**



**Internet**



**IP-Filetransfer**

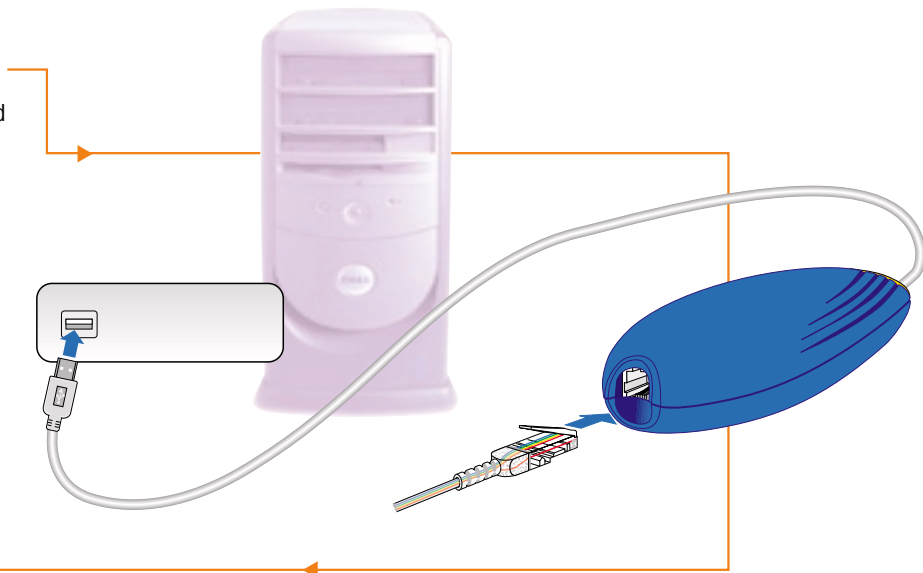


- **ISDN-Adapter für USB-Schnittstelle – kein Netzteil erforderlich**
- **Internet Highspeed 128 kbit/s**
- **All-in-One-Gerät für Internet, E-Mail, Fax, IP-Filetransfer und Remote Access**
- **Intelligente Verwaltung ein- und ausgehender Anrufe (Call Bumping)**
- **Ideal für Notebooks, PowerBooks und portablen Einsatz**
- **Modernes platzsparendes Design**
- **Ansprechende Statusanzeige der ISDN-Leitung**
- **Einfache und schnelle Installation**
- **Unterstützt Windows und Macintosh**

## 1.

### WEBSHUTTLE II anschließen

- ▶ Schalten Sie Ihren Rechner ein und starten Sie Windows.
- ▶ Schließen Sie das USB-Kabel an Ihren PC an.
- ▶ Verbinden Sie das WEBSHUTTLE II mit dem ISDN-Anschluss mittels des gelieferten ISDN-Kabels.



## 2.

### Softwareinstallation

- ▶ Legen Sie die WEBSHUTTLE II CD ein.

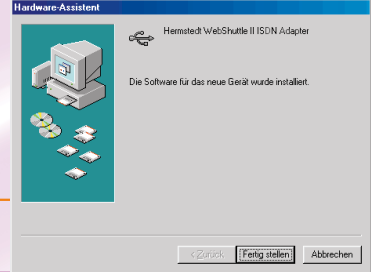
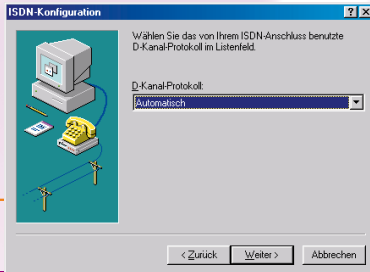
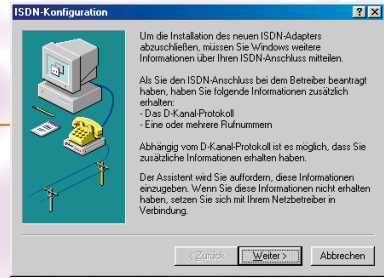
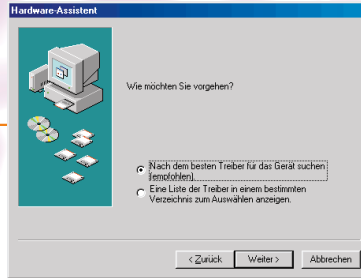
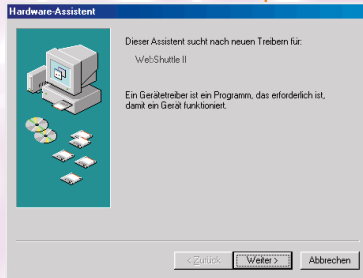
# ISDN

## ISDN

2.

Softwareinstallation

Unter Windows 98



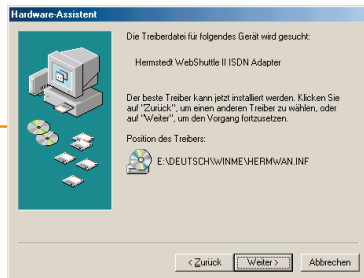
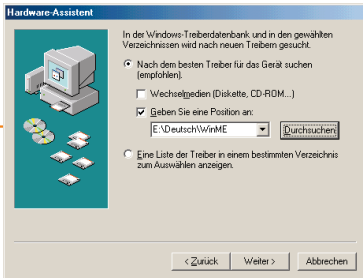
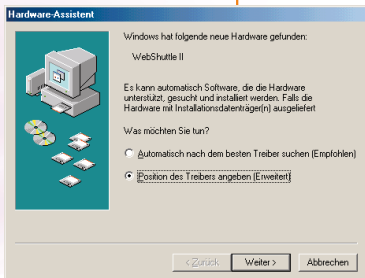
Communication is our business!



2.

Softwareinstallation

Unter Windows ME



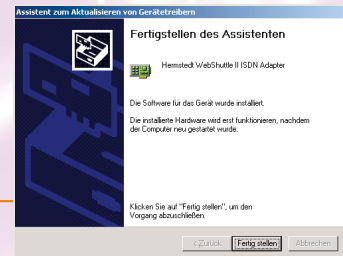
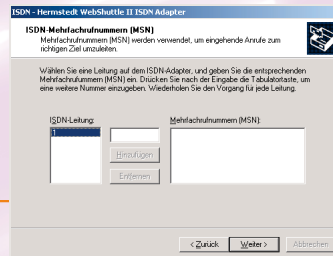
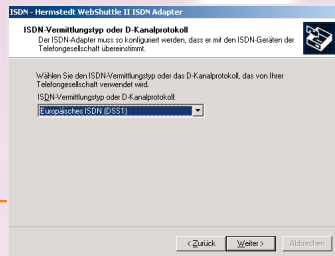
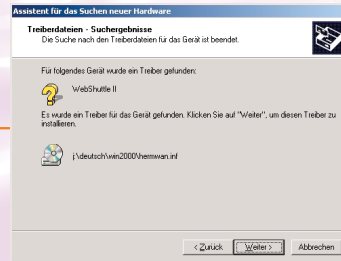
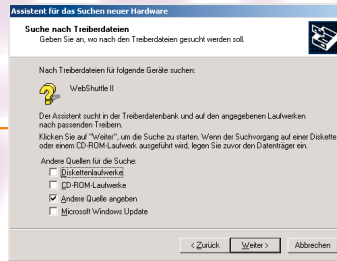
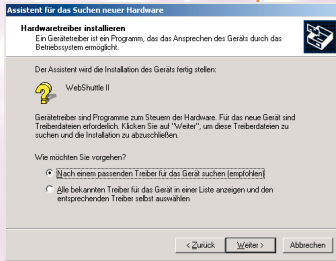
# ISDN

## ISDN

2.

Softwareinstallation

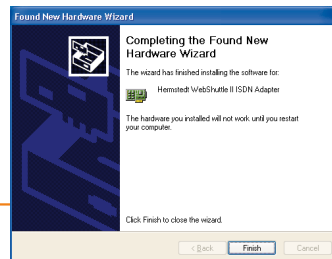
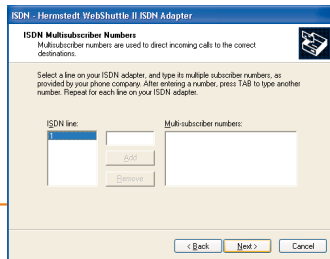
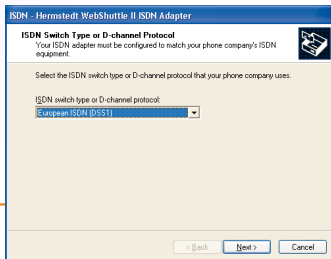
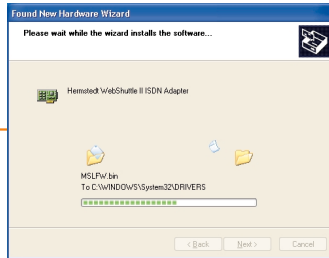
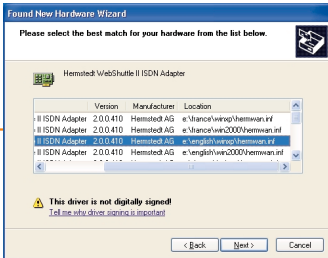
Unter Windows 2000



2.

Softwareinstallation

► Enter Windows XP



# ISDN

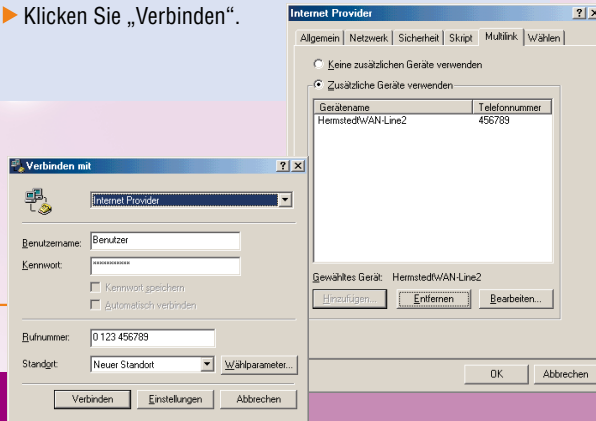
## ISDN

3.

Internet-Zugang einrichten ▶ Wählen Sie Ihren Internet-Anbieter

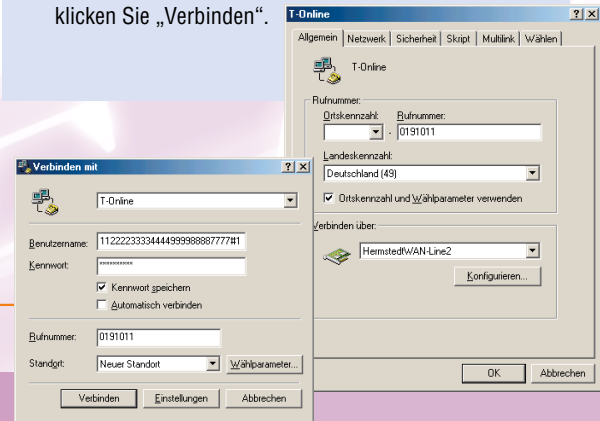
### Internet Anbieter

- ▶ Öffnen Sie das DFÜ-Netzwerkfenster.
- ▶ Legen Sie eine neue Verbindung an.
- ▶ Geben Sie Ihre Benutzerkennung, das Kennwort und die Telefonnummer für Ihren Internetzugang in die Felder „Benutzername“, „Kennwort“ und „Rufnummer“ ein.
- ▶ Klicken Sie „Verbinden“.



### T-Online

- ▶ Öffnen Sie das DFÜ-Netzwerkfenster.
- ▶ Legen Sie eine neue Verbindung an.
- ▶ Geben Sie Ihre Anschlusskennung, das Zeichen „#“ und Ihre Mitbenutzernummer in „Benutzername“ ein.
- ▶ Geben Sie Ihr Kennwort und die Rufnummer ein, und klicken Sie „Verbinden“.

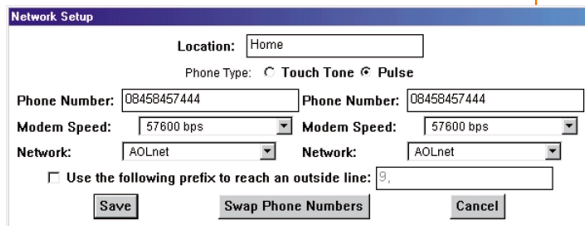
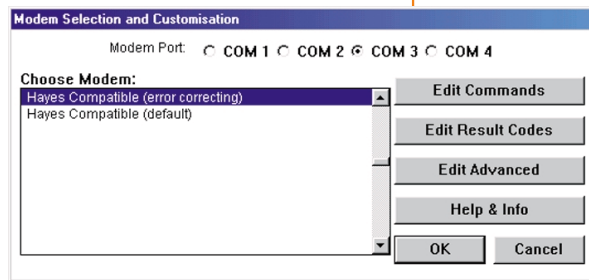


3.

## Wählen Sie Ihren Internet-Anbieter

### AOL (America Online)

- ▶ Klicken Sie im Programm „AOL“ im „Willkommen“-Fenster in Einstellungen.
- ▶ Im Fenster „Neuer Standort“ geben Sie die passende ISDN-Zugangsnummer in „Telefonnummer“ ein, und klicken Sie „Speichern“.
- ▶ Im Fenster „Modem-Einstellungen“ wählen Sie als Modem-Anschluss den passenden COM-Port und als Modem-Typ „Eigenes Modem-Profil“ ein, und klicken Sie „OK“.
- ▶ Klicken Sie „Anmelden“.

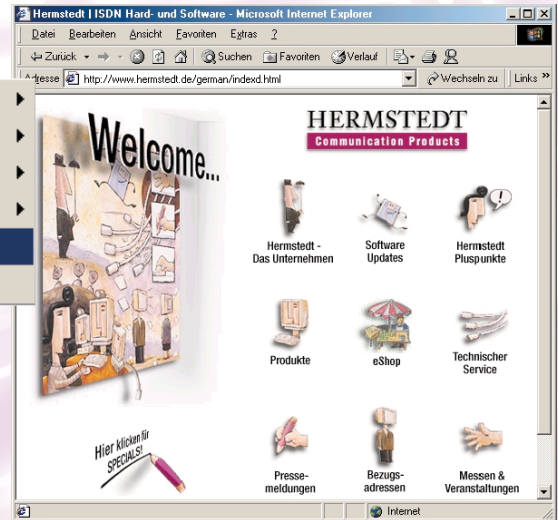
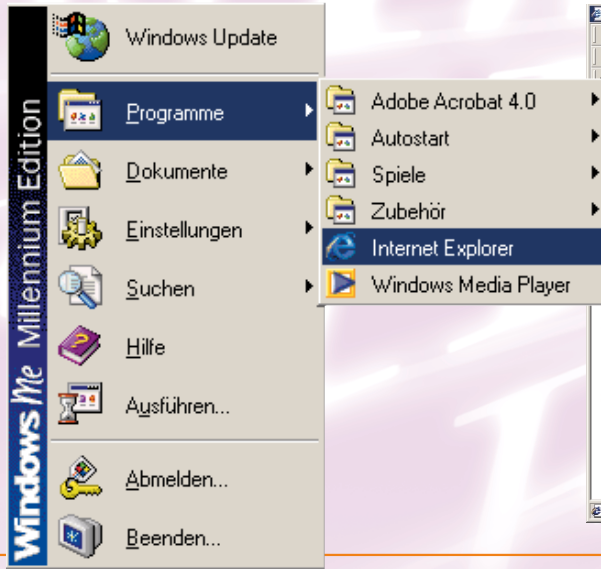


# ISDN

## ISDN

4

Internet Browser starten

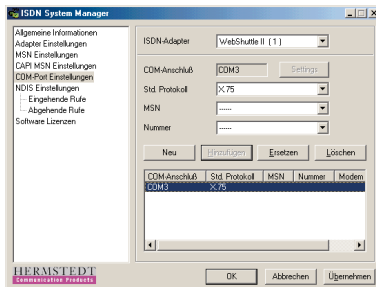


*Communication is our business!*

5.

## Fax senden und empfangen

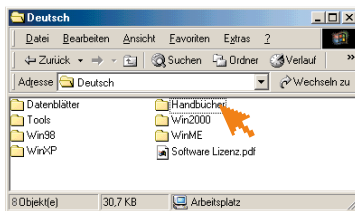
- ▶ Im Systemsteuerungsoption „ISDN System Manager“ konfigurieren Sie virtuelle COM-Anschlüsse für die analogen Verbindungen.
- ▶ In Ihrer bevorzugten Fax-Anwendung wählen Sie als Modem-Anschluss den vorkonfigurierten COM-Port aus.



6.

## Dokumentation

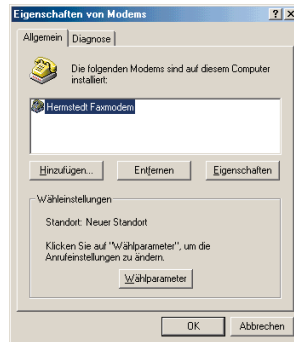
- ▶ Weitere Informationen finden Sie in unseren Handbüchern im Acrobat PDF Format auf der WEBSHUTTLE II CD.



7.

## Kostenlose Updates unter

[www.hermstedt.com](http://www.hermstedt.com)



# ISDN

Internet Highspeed **128** kbit/s

**Fax**



**Email**



**Internet**



**IP file transfer**



- **ISDN adapter for USB interface - no external power supply required**
- **128 kbit/s highspeed Internet**
- **All-in-one device for Internet, email, fax, IP file transfer and remote access**
- **Intelligent management of incoming and outgoing calls (Call Bumping)**
- **Ideal for notebooks, PowerBooks and mobile usage**
- **Modern, compact design**
- **Informative indication of ISDN line status**
- **Simple and quick installation**
- **Supports Windows and Macintosh**

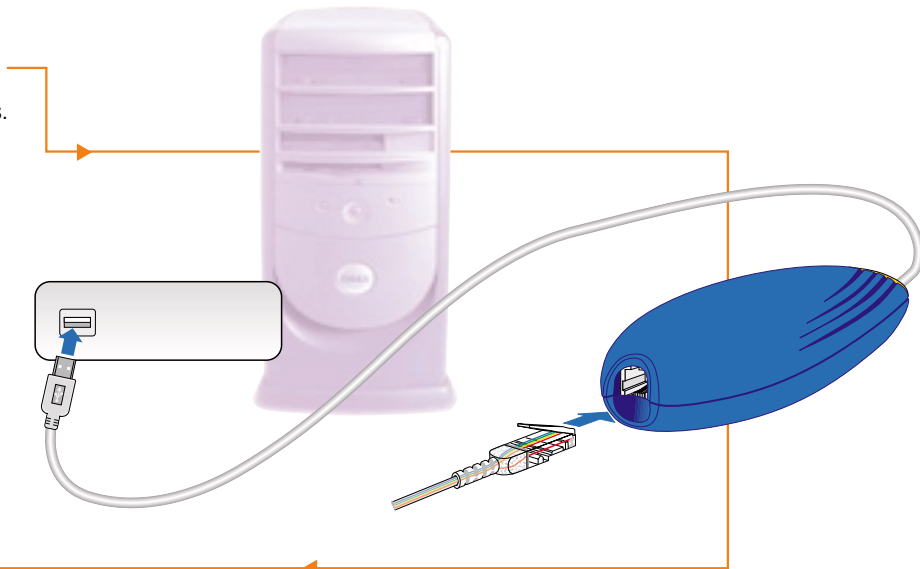


# WEBSHUTTLE II

## 1.

### Connect your WebSHUTTLE II

- ▶ Start your PC and launch Windows.
- ▶ Plug the USB cable into your PC.
- ▶ Plug the ISDN cable into your WebSHUTTLE II and the other end into your ISDN wall outlet.



## 2.

### Software installation

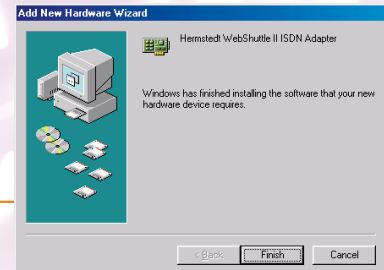
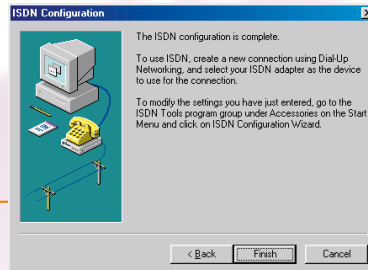
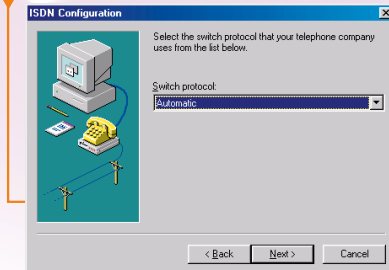
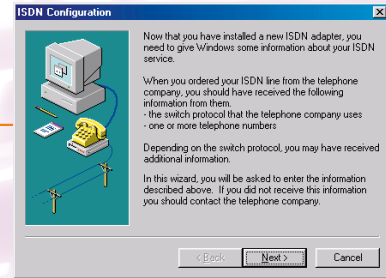
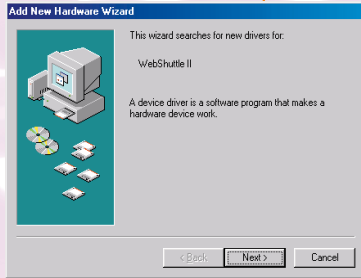
- ▶ Place the WebSHUTTLE CD in your CD drive.

# ISDN

## ISDN

2.

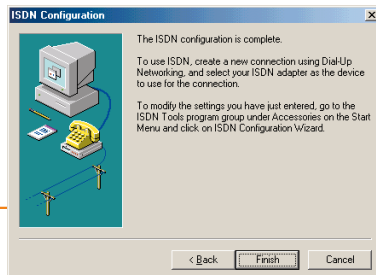
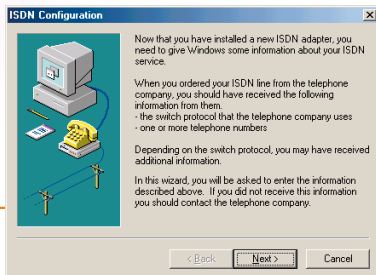
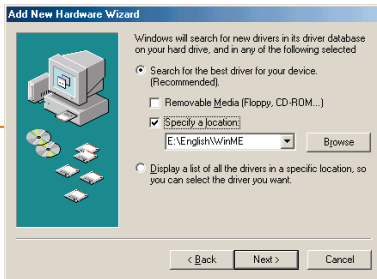
### Software installation | Under Windows 98



2.

Software installation

Under Windows ME



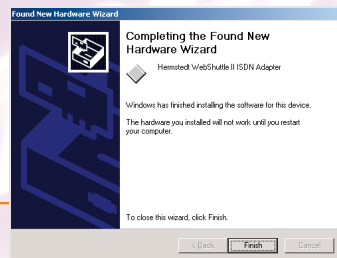
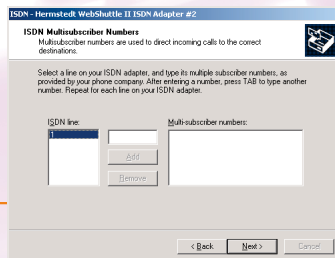
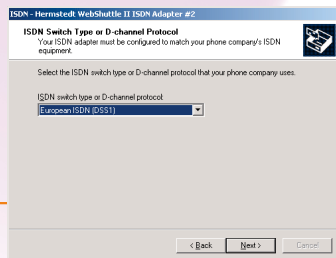
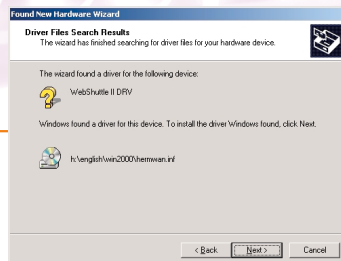
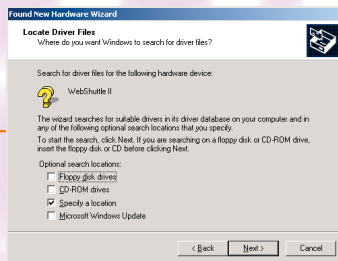
# ISDN

## ISDN

2.

Software installation

Under Windows 2000

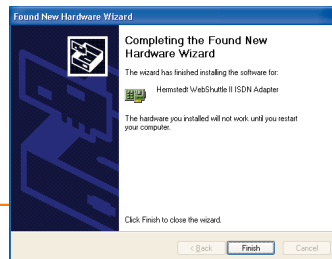
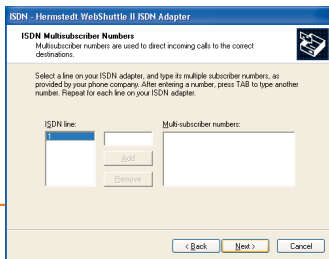
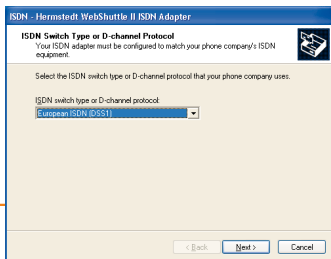
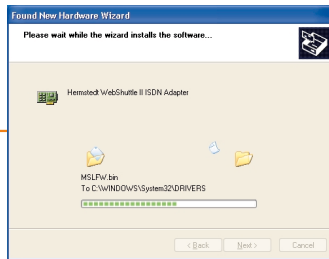
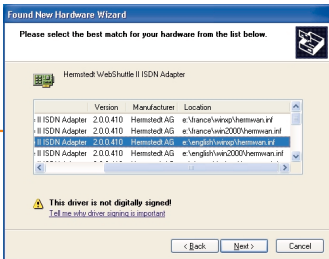
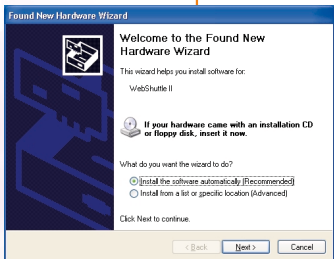


Communication is our business!

2.

Software installation

Under Windows XP



# ISDN

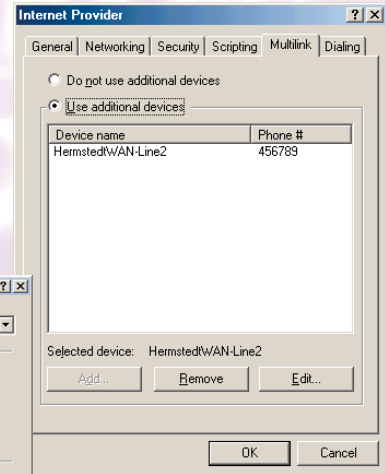
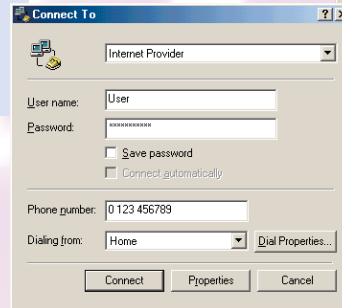
## ISDN

3.

Configure your Internet connection ▶ Choose your Internet service provider

### Internet Service Provider

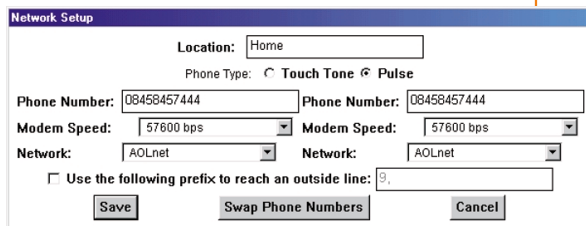
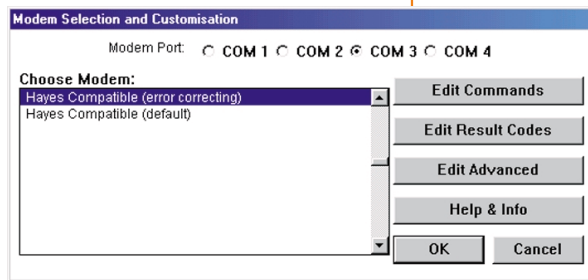
- ▶ Open the Dial-Up Networking window.
- ▶ Add a new connection.
- ▶ Enter your user name and password and the ISDN number for your internet connection in the fields marked "User name", "Password" and "Phone number".
- ▶ Click on "Connect".



## 3. Choose your Internet service provider

### AOL (America Online)

- ▶ Click on the application “AOL” in the “Welcome” window in “Configuration”.
- ▶ In the “New location” enter the relevant ISDN access number into “Telephone number”, and click on “Save”.
- ▶ In “Modem setup” choose as Modem port the adequate COM Port and as Modem type “Hayes Compatible” and click “OK”.
- ▶ Click on “Sign on”.

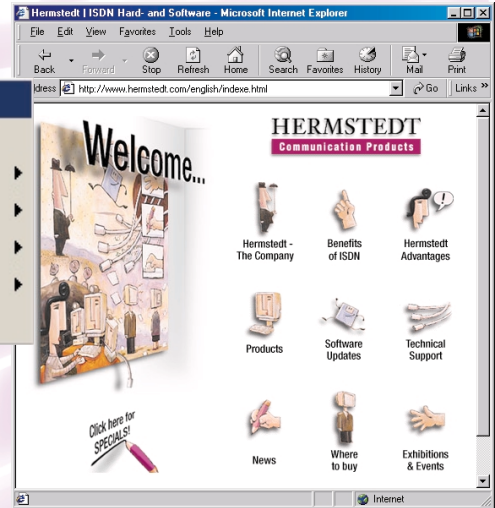
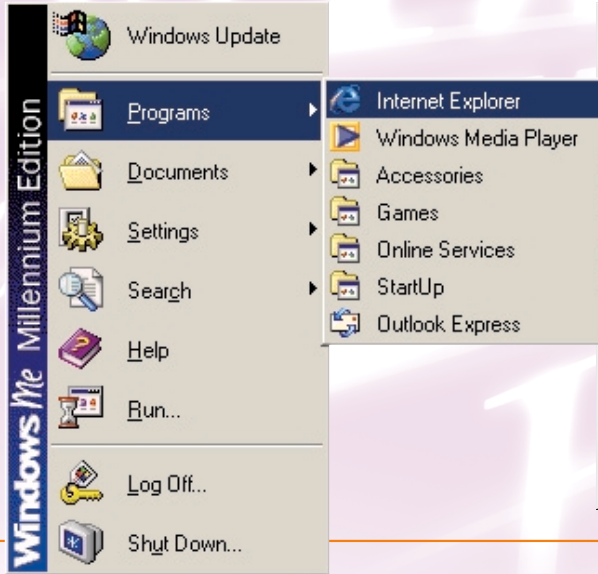


# ISDN

## ISDN

4

Start your www-Browser



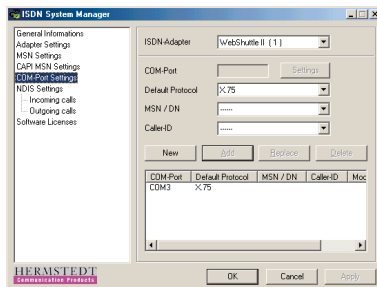
Communication is our business!



5.

## Sending and receiving faxes

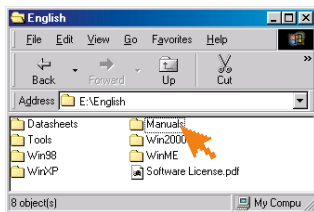
- ▶ Configure virtual COM ports for the analogue connections in the “ISDN System Manager” Control Panel.
- ▶ In your preferred fax application under “Modem connection”, select the pre-configured COM port.



6.

## Documentation

- ▶ For further information consult our user manual, which can be found on the WEBSHUTTLE II CD as an Acrobat PDF file.

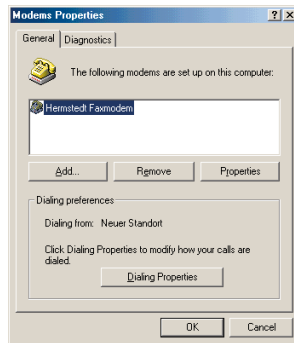


7.

## Free updates under

[www.hermstedt.com](http://www.hermstedt.com)

[www.hermstedt.com](http://www.hermstedt.com)



# RNIS

RNIS

Internet haut débit

128 kbit/s

**Télécopie**



**E-mail**



**Internet**



**Transfert IP**

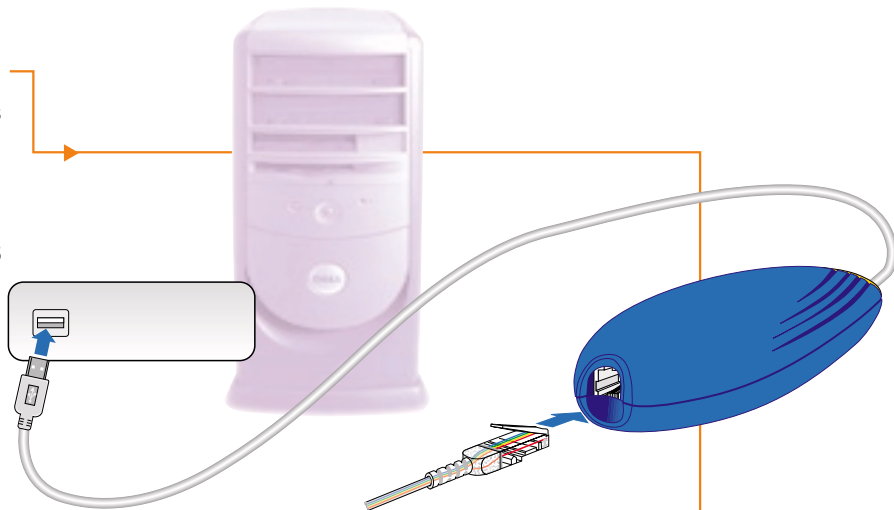


- *Adaptateur RNIS pour port USB – aucune alimentation externe requise*
- *Internet haut débit 128 kbit/s*
- *Adaptateur tout en un pour Internet, courrier électronique, télécopie, transfert de fichiers sur IP et accès distant*
- *Gestion intelligente des appels entrants et sortants (Call Bumping)*
- *Idéal pour notebooks, PowerBooks et autres portables*
- *Design moderne et compact*
- *Affichage clair de l'état de la ligne RNIS*
- *Installation simple et rapide*
- *Pour Windows et Macintosh*

**1.**

## Connectez votre WEBSHUTTLE II

- ▶ Démarrez votre PC et lancez Windows
- ▶ Branchez le câble USB à votre ordinateur.
- ▶ Reliez votre WEBSHUTTLE II à la ligne RNIS par le biais du câble RNIS livré en standard.



**2.**

## Installez le logiciel

- ▶ Insérez le CD ROM WEBSHUTTLE II CD dans le lecteur de CD ROM.

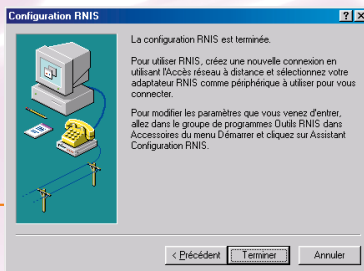
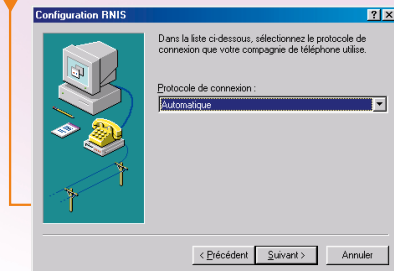
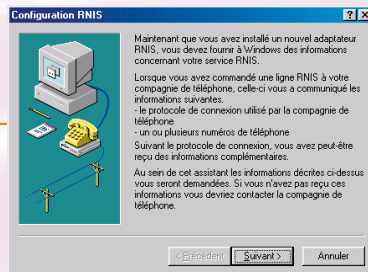
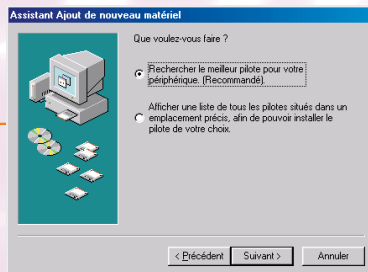
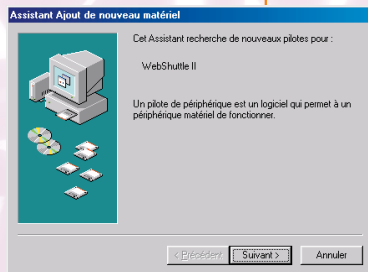
# RNIS

## RNIS

### 2.

### Installez le logiciel

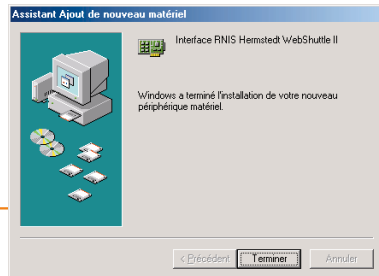
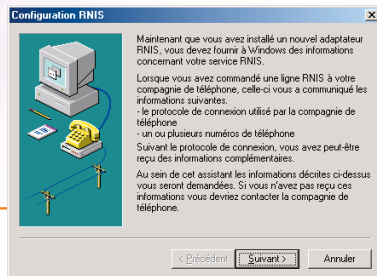
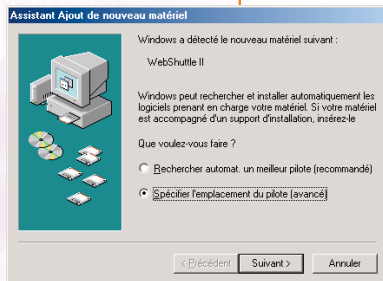
### Sous Windows 98



2.

Installez le logiciel

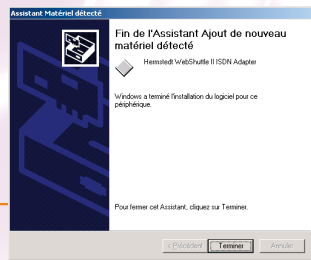
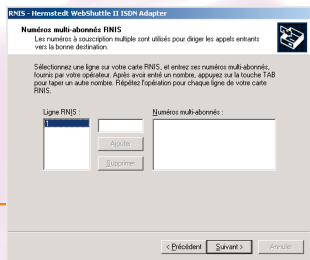
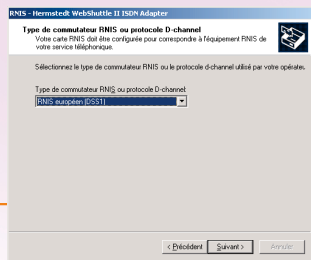
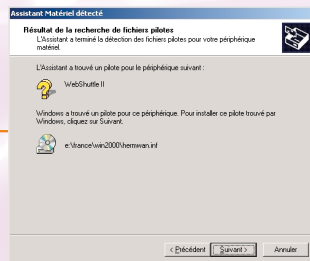
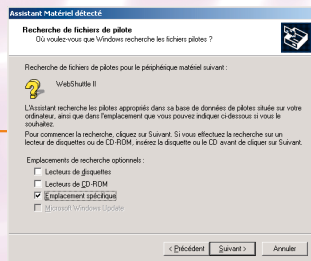
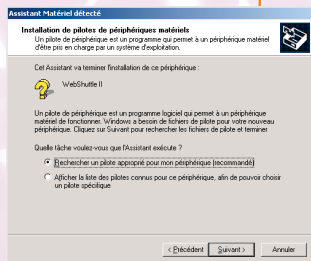
► Sous Windows ME



2.

Installez le logiciel

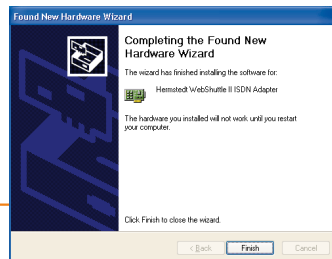
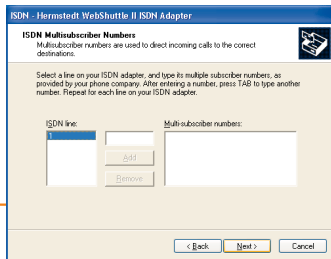
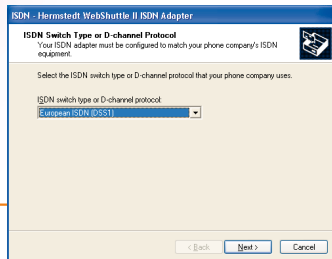
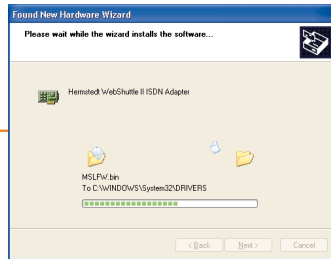
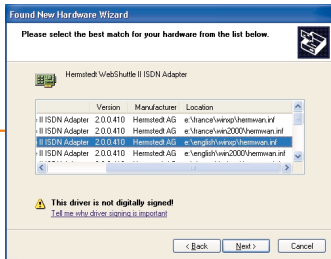
► Sous Windows 2000



2.

Installez le logiciel

Sous Windows XP



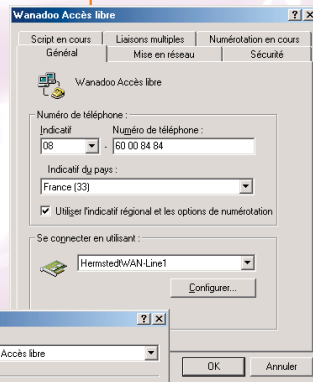
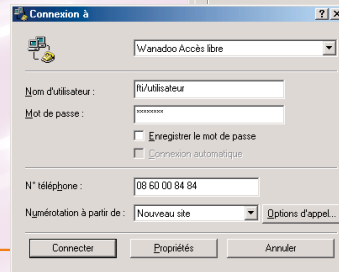
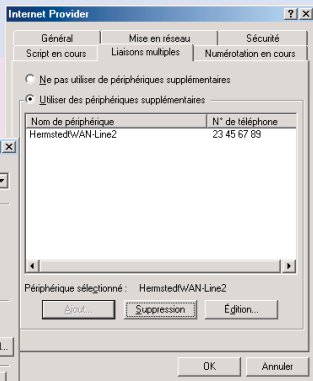
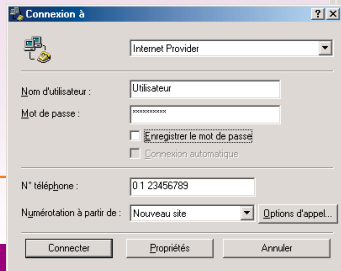
3.

Configurez votre accès Internet

► Sélectionnez votre fournisseur d'accès Internet

### Fournisseur d'accès Internet / Wanadoo

- Ouvrez la fenêtre de l'Accès réseau à distance.
- Ajoutez une nouvelle connexion.
- Entrez vos nom et mot de passe et le numéro de téléphone pour votre accès Internet dans les champs « Nom d'utilisateur », « Mot de passe » et « N° de téléphone ».
- Cliquez sur « Connecter ».



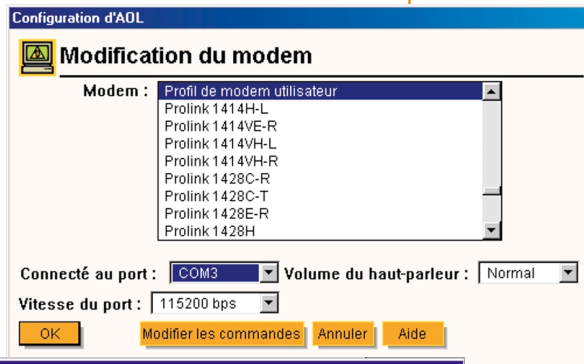


3.

Sélectionnez votre fournisseur d'accès Internet

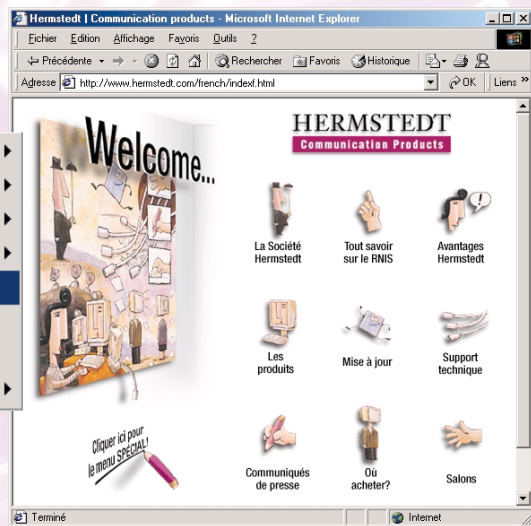
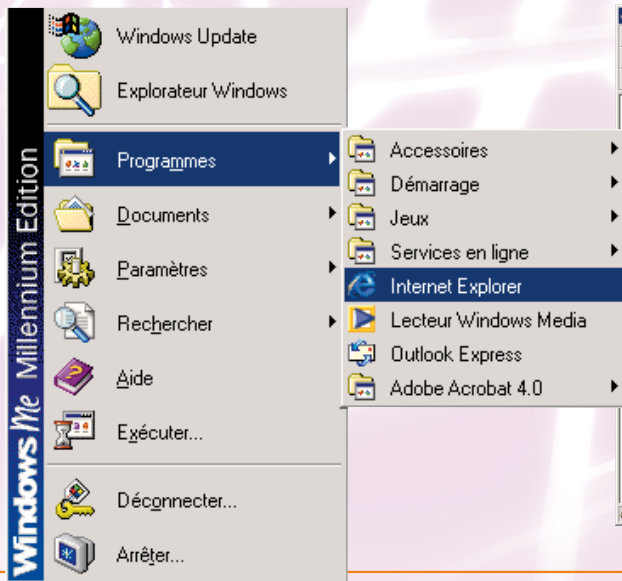
### AOL (America Online)

- ▶ Dans « Configuration du réseau », entrez le numéro d'accès RNIS dans la case « N° de téléphone », puis cliquez sur « Enregistrer ».
- ▶ Dans « Configuration d'AOL », sélectionnez le port adéquat (pré-configuré dans le panneau de configuration « ISDN System Manager ») dans la case « Connecté au port » et « Profil de modem utilisateur » dans la case « Modem », puis cliquez « OK ».
- ▶ Cliquez sur « Connexion ».



4

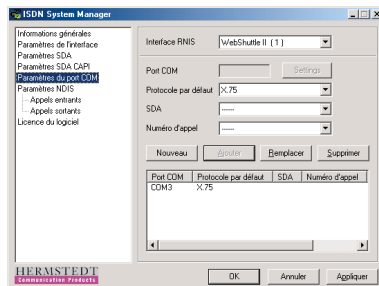
Lancez votre navigateur Internet



5.

## Envoyer et recevoir des télécopies

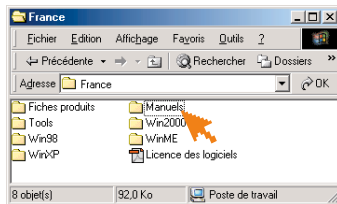
- ▶ Dans le panneau de configuration « ISDN System Manager », configurez les ports de communication (COM) virtuels pour les connexions analogiques.
- ▶ Dans votre application de télécopie préférée, sélectionnez un port de communication virtuel dans le champ du port modem.



6.

## Documentation

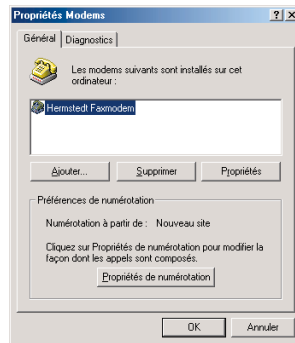
- ▶ Pour de plus amples informations, veuillez vous reporter aux manuels (format Acrobat PDF) contenus sur le CD ROM de WEBSHUTTLE II.



7.

## Mises à jour gratuites sur

[www.hermstedt.com](http://www.hermstedt.com)



# WEBSHUTTLE *II*



Hermstedt AG • Germany  
Carl-Reuther-Straße 3  
D-68305 Mannheim  
Tel. +49-(0) 621-76 50-0  
Fax +49-(0) 621-76 50-100  
E-Mail: [info@hermstedt.de](mailto:info@hermstedt.de)  
<http://www.hermstedt.com>

Hermstedt • UK  
7 Warwick Court  
London WC1R 5DJ  
Phone +44-(0)207-421 15 00  
Fax +44-(0)207-242 29 04  
Email: [sales@hermstedt.co.uk](mailto:sales@hermstedt.co.uk)  
<http://www.hermstedt.co.uk>

[www.hermstedt.com](http://www.hermstedt.com)

*ISDN*

**USB**  
UNIVERSAL SERIAL BUS