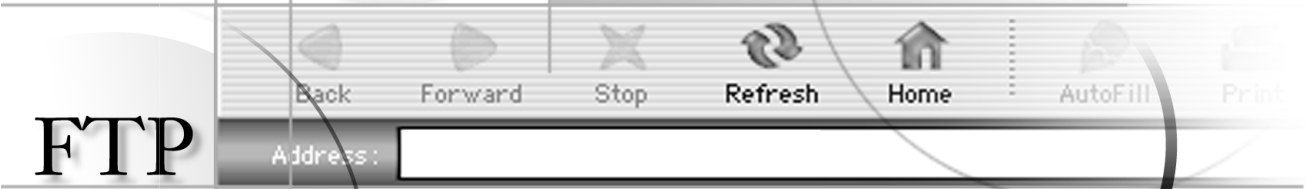




**INTERNET**



**FTP**

**E-MAIL**



**WEBSHUTTLE II**



Both the product described in this user's guide and the documentation are protected by copyright law. Copyright remains with the developer. Software and documentation may not be copied, reproduced, translated or distributed in any form, not even in part, without prior written consent by the copyright owner.

The developers decline any liability with regard to the software described herein. They do not make any warranties for the correctness of the contents of this documentation, nor are they liable for any direct or indirect damages which may arise from the use of, or the inability to use, either the software or the accompanying documentation, even if the possibility of such damages may have been brought to their attention.

The developers do not assume any responsibility for any bugs or defects in the software. This restriction of liability extends also to their distributors and retailers.

Trademarks and registered trademarks are acknowledged. They remain the exclusive property of their owners. Absence of such an identification does not constitute a breach of trademark protection.

1st edition

(c) 2001 Hermstedt AG  
E-mail: [info@hermstedt.de](mailto:info@hermstedt.de)  
<http://www.hermstedt.com>

Hermstedt AG • Germany  
Carl-Reuther-Straße 3  
D- 68305 Mannheim  
Phone +49-621-76 50-200  
Fax +49-621-76 50-333

Hermstedt Ltd. • UK  
7 Warwick Court  
London  
WC1R 5DJ  
Phone +44-20-74 21 15 00  
Fax +44-20-74 21 15 25

**HERMSTEDT**  
**Communication Products**

# WEBSHUTTLE II

USER'S GUIDE



## Chapter 1: Introduction

<b>1.1 About this User's Guide</b> .....	<b>3</b>
<b>1.2 Packing list</b> .....	<b>3</b>
<b>1.3 System requirements</b> .....	<b>4</b>

## Chapter 2: Installation

<b>2.1 Connecting WEBSHUTTLE II</b> .....	<b>7</b>
<b>2.2 Installing the software for Windows 2000 and XP</b> .....	<b>7</b>
<b>2.3 Installing the software for Windows 98 and Me</b> .....	<b>11</b>
<b>2.4 The first connection</b> .....	<b>13</b>

## Chapter 3: Using WEBSHUTTLE II

<b>3.1 Accessing the Internet through AOL</b> .....	<b>20</b>
3.1.1 Setting up a COM port.....	20
3.1.2 Setting up AOL .....	21
3.1.3 Connecting and disconnecting .....	25
<b>3.2 Accessing the Internet through a service provider</b> .....	<b>25</b>
3.2.1 Configuring your computer .....	25
3.2.2 Connecting and disconnecting .....	29
<b>3.3 Internet, and more</b> .....	<b>29</b>
3.3.1 Using Internet applications.....	29
3.3.2 Sending and receiving faxes.....	29

## Chapter 4: Reference

<b>4.1 ISDN SYSTEM MANAGER</b> .....	<b>33</b>
4.1.1 Concept .....	33
4.1.2 General Information .....	34
4.1.3 Adapter Settings.....	35
4.1.4 MSN Settings .....	36
4.1.5 CAPI MSN Settings .....	37
4.1.6 COM Port Settings.....	38
4.1.7 NDIS Settings.....	40
4.1.8 Incoming Calls .....	41
4.1.9 Access Control Settings .....	41
4.1.10 Adapter Specific Settings .....	42
<b>4.2 Using Dial-Up Networking</b> .....	<b>43</b>
4.2.1 Getting into the Internet or an Intranet (Windows 98/Me).....	43
4.2.2 Getting into the Internet or an Intranet (Windows 2000).....	44

4.2.3 Getting into the Internet or an Intranet (Windows XP) .....	45
4.2.4 Connecting and Disconnecting.....	47
4.2.5 Using a Dial-Up Server.....	47
<b>4.3 LED signals .....</b>	<b>48</b>

## **Appendix**

<b>A.1 Troubleshooting tips .....</b>	<b>51</b>
A.1.1 Make sure WEBSHUTTLE II is connected correctly .....	51
A.1.2 Make sure WEBSHUTTLE II and your ISDN line are working .....	51
A.1.3 Check the connection to your Internet provider .....	52
A.1.4 I'm having problems sending or receiving faxes.....	52
A.1.5 Technical support and software updates.....	52
<b>A.2 Technical Specifications .....</b>	<b>53</b>

---

# CHAPTER I

*Introduction*





## 1.1 About this User's Guide

This user's guide contains information about the USB ISDN adapter `WEBSHUTTLE II`. It enables you to surf the Internet using your computer, send and receive files via FTP and use electronic mail.

The second chapter guides you through the installation of the software, the setup of the `WEBSHUTTLE II`, and provides some recommendations for a successful start when using the product for the first time.

The chapter 'Using `WEBSHUTTLE II`' shows you different ways to access the Internet.

A detailed reference section can be found in the fourth chapter of this user's guide. Every dialogue box, menu and window is listed with its features and how to use them.

The appendix contains tips for solving problems and the technical specifications of the `WEBSHUTTLE II`.

The "WebShuttle II CD" also contains the software for using `WEBSHUTTLE II` with a Mac OS based computer and the WebShuttle II Mac OS User's Guide. The latter is accessible only on a Macintosh computer.

## 1.2 Packing list

The `WEBSHUTTLE II` package contains:

- `WEBSHUTTLE II`
- ISDN cable with RJ-45 plugs at each end
- CD-ROM "WebShuttle II CD"
- A Quick Guide

### 1.3 System requirements

You need the following components to use *WEBSHUTTLE II*:

- A computer with Windows 98, Windows Me, Windows 2000, or Windows XP running.
- A free USB port at the computer or on a USB hub.
- An ISDN S<sub>0</sub> line in reach of the computer.

You can also use your *WEBSHUTTLE II* with a Macintosh. Please see the Macintosh User's Guide for requirements and additional information. You'll find it on the WebShuttle II CD-ROM.

---

# CHAPTER 2

*Installation*



This chapter describes how to connect the WEBSHUTTLE II to your computer and how to install the necessary software for your Windows system. We also explain how to use WEBSHUTTLE II for the first time and how to connect to a remote site.

## 2.1 Connecting WEBSHUTTLE II

To use your WEBSHUTTLE II, you have to connect it to the ISDN outlet and your computer. The necessary cables are supplied.

The WEBSHUTTLE II has one port and one fixed USB cable.

### 1. Plug the USB cable into the USB port of your computer.

You can also plug the cable into a free port of a USB hub.

A yellow light at the front of the WEBSHUTTLE II will now light up.

### 2. Put one plug of the ISDN cable into the ISDN port of the WEBSHUTTLE II.

### 3. Plug the other end of this cable into your ISDN wall outlet.

Now WEBSHUTTLE II is connected to your computer. You should proceed with the next section and perform the installation of the necessary software.

## 2.2 Installing the software for Windows 2000 and XP

In respect of the here mentioned details, the proceedings of the driver installation are almost the same with Windows 2000 and Windows XP. After you have connected the WEBSHUTTLE II to your computer, the Hardware Wizard of Windows started automatically. It then tried to activate the necessary driver software.

Your screen shows the first dialogue of the Found New Hardware Wizard.



**1. Click Next.**



**2. Select Search for a suitable driver.**

**3. Insert the “WebShuttle II CD” into your CD-ROM drive and wait a few seconds until the CD-ROM is mounted.**

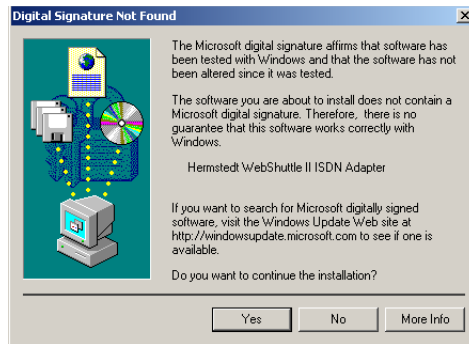
If for any reason you like to install the drivers manually: You find them in the directory “D:\English\Win2000” respective “D:\English\WinXP.” Replace “D:” with the drive letter of your CD-ROM drive.

**4. Click Next.**

The wizard now copies the necessary driver files to your hard disk.

Then the Hardware Wizard will probably need to install some additional Windows files as well.

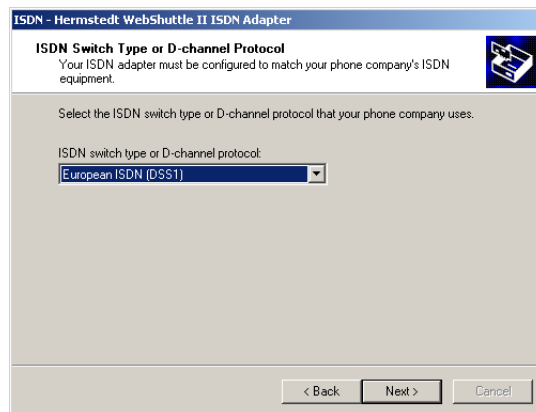
Windows might show now a dialogue stating a missing digital signature of the driver files. This is an additional security feature, which is not necessary when installing from a manufacturer's CD-ROM.



##### 5. Click Yes.

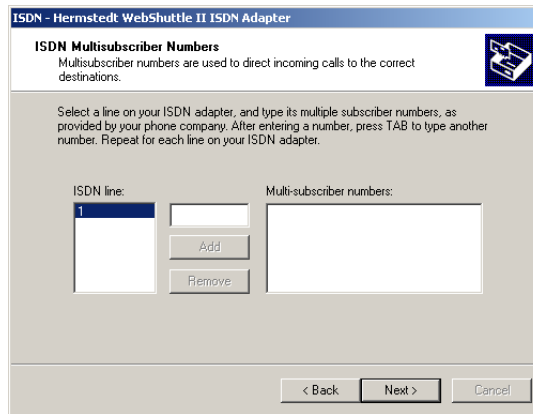
The installation process commences and the driver components are stored at the appropriate places. This may last some seconds.

Now you are taken through the basic ISDN configuration of the WEBSHUTTLE II:



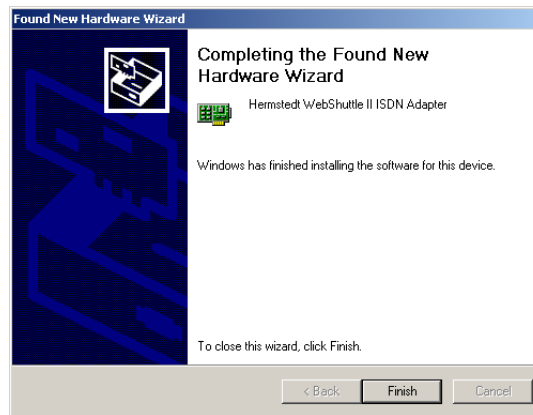
The proposed D channel protocol "European ISDN (DSS1)" should fit almost every installation.

## 6. Click Next.



Multisubscriber Numbers (MSN) allow you to specify at which phone number the ISDN adapter accepts incoming calls. You may not choose an arbitrary number, but one of the numbers you received from your telecommunications company.

## 7. Click Next.



## 8. Click Finish.

The installation is done and your computer is ready for using the WEBSHUTTLE II to connect via ISDN to online services. If the ISDN wall outlet is connected, an orange-coloured light inside the ISDN



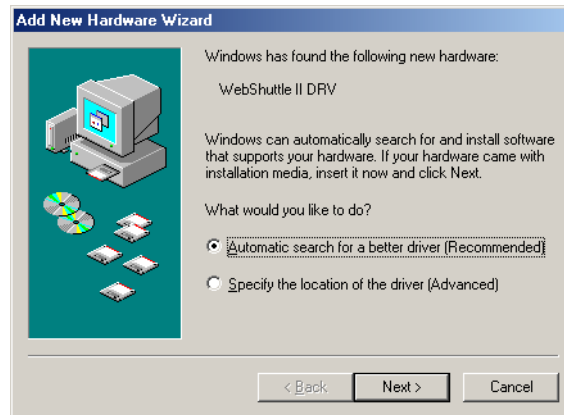
plug of the WEBSHUTTLE II starts pulsing. For a quick try-out see ‘The first connection’ on page 13.

### 2.3 Installing the software for Windows 98 and Me

After you have connected the WEBSHUTTLE II to your computer, the Hardware Wizard of Windows started automatically. It then tried to activate the necessary driver software.

In addition to the USB software for the WEBSHUTTLE II you have to install the software needed in order to use Dial-Up Networking. The following steps show you this process in detail.

Your screen shows the first dialogue of the Hardware Wizard.



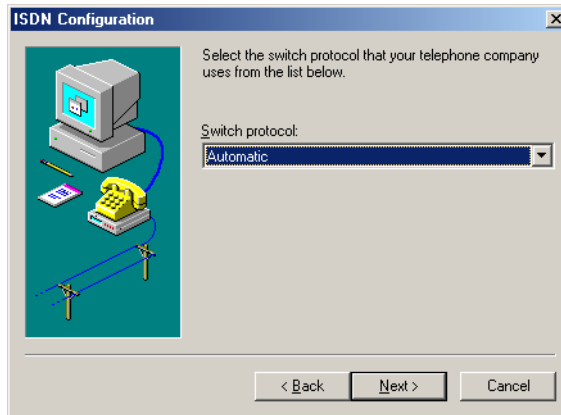
1. Insert the “WebShuttle II CD” into your CD-ROM drive and wait a few seconds until the CD-ROM is mounted.
2. Select Automatic search for a better driver and click Next.

If for any reason you like to install the drivers manually: You find them in the directory “D:\English\Win98” respective “D:\English\WinMe.” Replace “D:” with the drive letter of your CD-ROM drive.

The wizard now copies the necessary driver files to your hard disk. Have your Windows CD-ROM at hand, as the Hardware Wizard will probably need to install some additional Windows files as well.

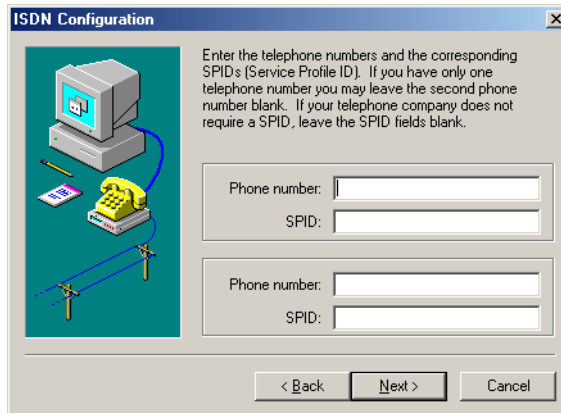
The installation process commences and the driver components are stored at the appropriate places. This may last some seconds.

Now you are taken through the basic ISDN configuration of the WEBSHUTTLE II:

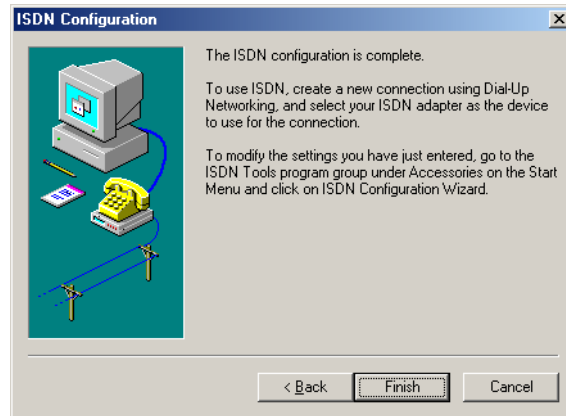


The proposed "Automatic" protocol detection should fit almost every installation.

### 3. Click Next.



Multisubscriber Numbers (MSN) allow you to specify at which phone number the ISDN adapter accepts incoming calls. You may not choose an arbitrary number, but one of the numbers you received from your telephone company.



#### 4. Click Finish.

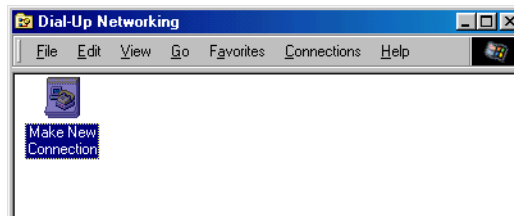
After restarting your computer it is ready for using the WEBSHUTTLE II to connect via ISDN to online services. If the ISDN wall outlet is connected, an orange-coloured light inside the ISDN plug of the WEBSHUTTLE II starts pulsing.

## 2.4 The first connection

Everything is set up for your WEBSHUTTLE II's first connection. Hermstedt has set up a number which allows you to test whether your installation of the WEBSHUTTLE II has been successful.

Establishing a connection to the Hermstedt test site:

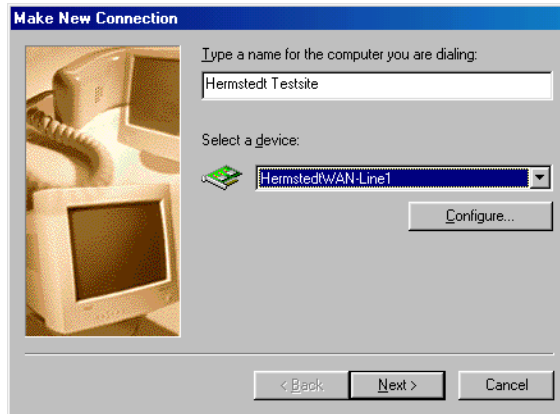
#### 1. Open Dial-Up Networking inside My Computer.



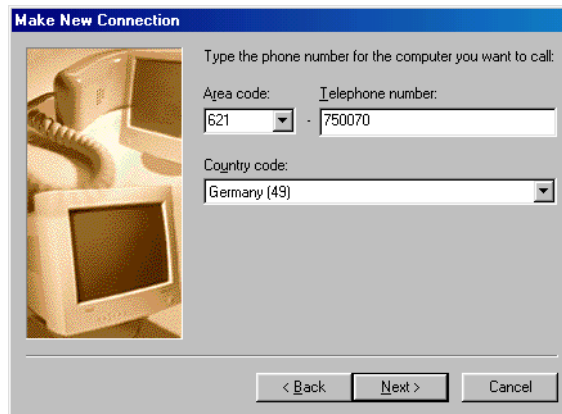
#### 2. Open Make New Connection.

If you open Dial-Up Networking the first time, Windows 98 automatically opens Make New Connection for you.

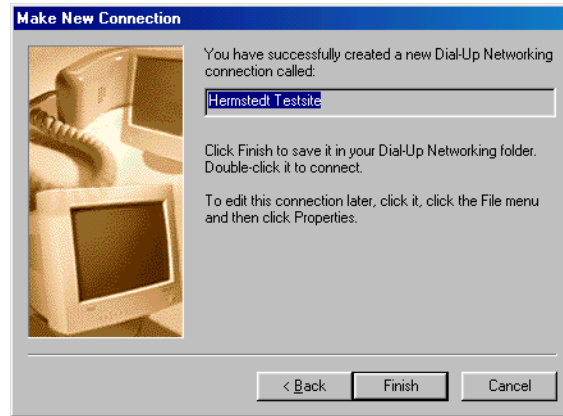
The following window is shown:



3. Enter a name, i.e. "Hermstedt Testsite."
4. Use the pop-up to select the device Hermstedt WAN-Line1.
5. Click Next.

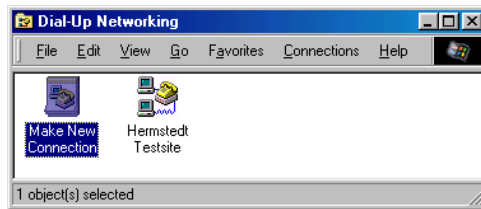


6. Enter the area code "621," the phone number "750070," and choose the country code for Germany (49).
7. Click Next.

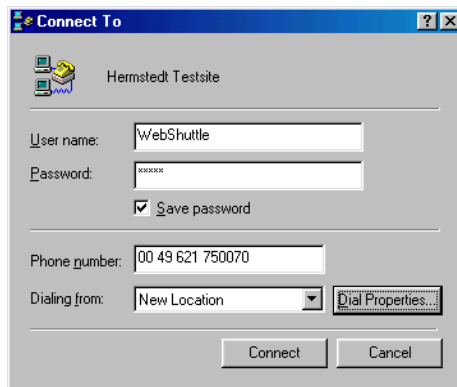


#### 8. Click Finish.

The Dial-Up Network window should now show an icon of the new connection you have just created.



#### 9. Open Hermstedt Testsite.



**10. Enter the name “WebShuttle” and as password “Guest” (with a capital “G”) and click Connect.**

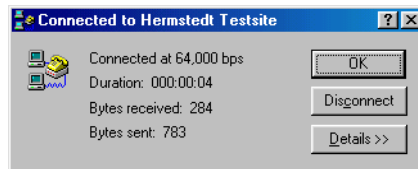
Some seconds later you will see the message “Connection established” in the Status part of the window.

Congratulations! Your WEBSHUTTLE II is configured correctly and you can now start using it.

If the message “Remote station busy” is shown, everything is set up correctly, but Hermstedt’s server is busy. Please try again later.

Please remember to use the correct country code for Germany when dialing. If you are dialing from the UK remember to dial 000 and not 00 to access a data line at the exchange. If a connection was not established, please see section ‘Troubleshooting tips’ on page 51.

**11. Open My Connection again.**



**12. Click Disconnect.**

Now you can read on with the next chapter ‘Using WEBSHUTTLE’ which explains how to connect via ISDN to the Internet.

---

# CHAPTER 3

*Using WEBSHUTTLE II*





After you have connected your WEBSHUTTLE II, installed the software and configured your computer, you can use your WEBSHUTTLE II to surf the Internet and access many other services on the Internet.

There is only one piece of information missing to start surfing: through which Internet service provider or online service to connect to the Internet.

### ***I already have an Internet account***

If you already have an account with an Internet service provider (“ISP”) or online service, you can use one of the following sections to configure your WEBSHUTTLE II to use it:

- If you have an AOL account, please refer to section 3.1 on page 20.
- If you have an account with another Internet service provider, please refer to section 3.2 on page 25.

### ***I don't have an Internet account yet***

Before you can dial into the Internet, you'll need an account with some online service or Internet service provider (“ISP”). Usually, you'll need to register with the service or provider, and sign a contract.

### ***Which Internet service provider should I select?***

Which of the many services and providers best fits your need cannot be answered easily. Your decision might be based on a number of questions, for example:

- How far away are you from the nearest access point?  
Since you dial into the access point via an ISDN connection, which you usually will be billed for, you should select a provider or service that offers an access point near you (in terms of connection rates), or that offers a country-wide access number.
- How much are the monthly and hourly rates?  
In addition to the connection rate, you usually will be billed for the time you spend online. Some providers offer free hours of online time.
- What additional services would you like to use?

Many online services and providers offer services in addition to surfing the Internet, such as home banking, your own home page, or access to special databases.

Many computer magazines regularly publish comparisons and test of online services and Internet service providers which might be helpful for you.

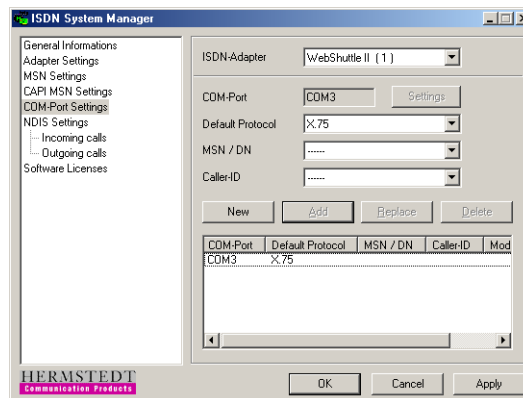
### 3.1 Accessing the Internet through AOL

This section explains how you configure WEBSHUTTLE II and your computer to access the Internet through “America Online” (or AOL for short). To access the Internet as well as AOL’s own services, you use the AOL software. You find it on the AOL CD-ROM.

#### 3.1.1 Setting up a COM port

Despite the fact that the WEBSHUTTLE II is an ISDN adapter, you have to configure it as a modem to make the AOL software work with it. The connection is made via ISDN and you get the full ISDN speed.

1. **Open the control panel ISDN SYSTEM MANAGER.**
2. **Choose COM Port settings from the left list.**
3. **Click New.**
4. **Choose “X.75” as Default Protocol.**
5. **Click Add.**



6. **Click OK to close the control panel.**

This creates a port “COM3:” for the WEBSHUTTLE II, which looks like a modem connected to a serial port to the AOL software.

### 3.1.2 Setting up AOL

To set up the AOL software to use WEBSHUTTLE II follow these steps:

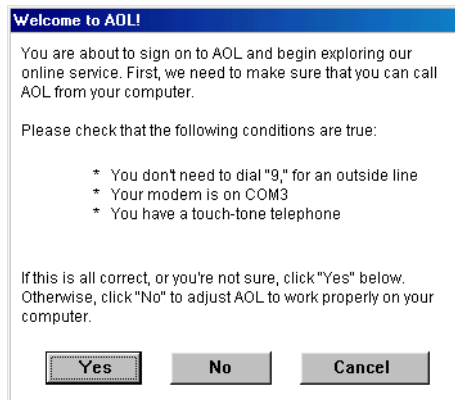
#### 1. Install the AOL software from the AOL CD-ROM.

After installing the software you’ll need to restart your computer. You’ll find a folder “AOL” on you hard disk:



#### 2. Launch AOL by double-clicking it.

After a few moments, the following “Welcome” window is shown:

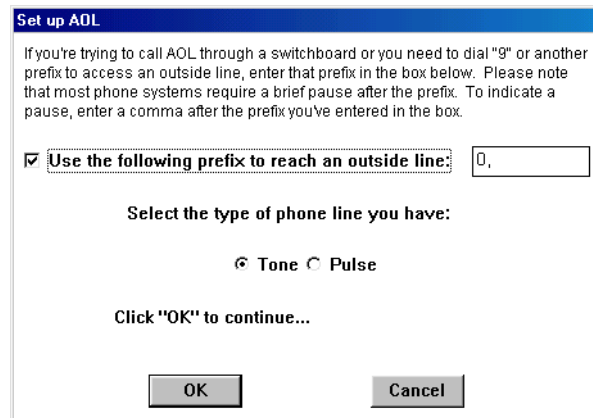


#### 3. If the shown settings are ok, click Yes, otherwise No.

You created a virtual COM port, COM3, using the X.75 standard protocol. This port was recognized automatically by the AOL software and set.

If you clicked Yes, please commence with step 7. further down.

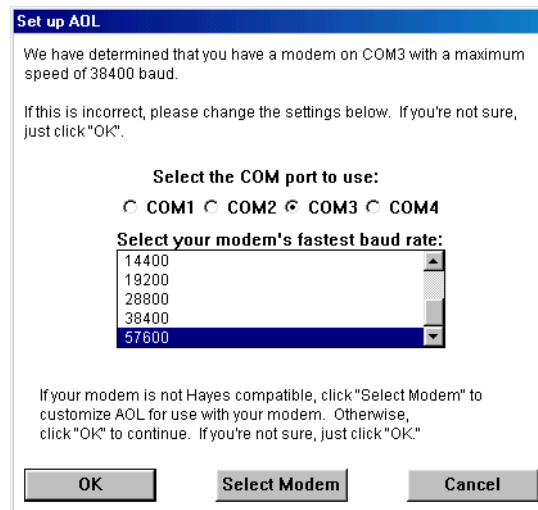
If you click No you are guided through a series of set-up dialogues:



4. You may enter here whether you have to use a prefix for getting an outside line.

A comma after the digit tells the modem to wait for a small amount of time. Some PBX devices need this kind of setting.

5. Click OK.



Here you can specify the COM port to use. The speed selected is irrelevant: all connections will be made at the full ISDN speed of

64,000 bps. You normally do not need to use the Select Modem option, since the default “Hayes-compatible” will do.

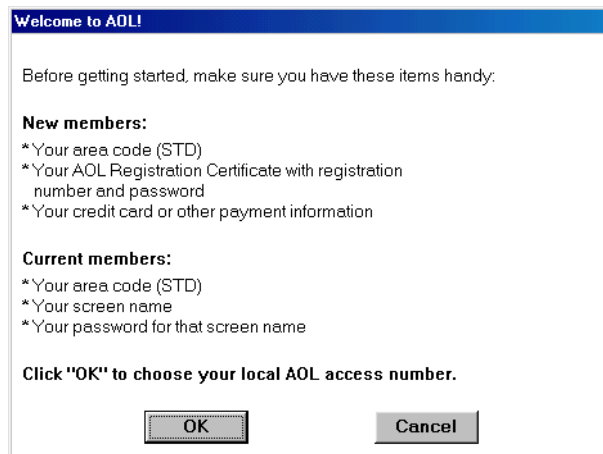
**6. Click OK.**

An info screen is shown.



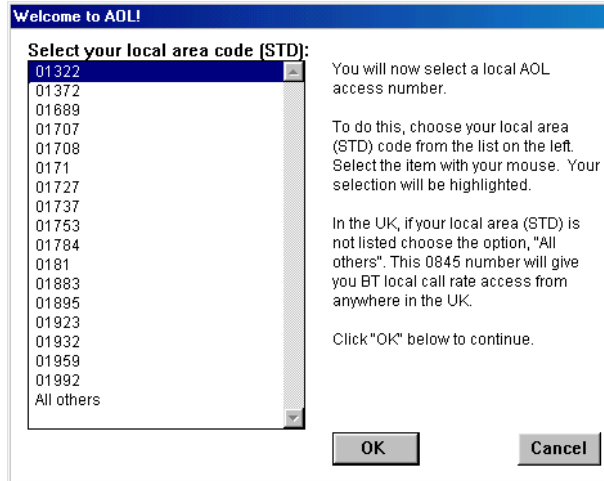
**7. Click Continue.**

Another screenful of information in preparation of the logon process:



**8. Click OK.**

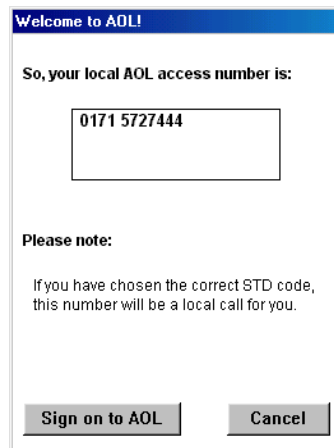
The following screenshot is from the UK version of the AOL software. Depending on your local AOL software, it will look different.



Choose your local access number or the local area code, which automatically defines an access number.

**9. Click OK.**

Your choice is evaluated and the complete access number, which will be dialed is shown.



**10. Click Sign on to AOL.**



Guest Sign-On:

Please enter your screen name:

Please enter your password:

(Use TAB to move between fields).

### 11. Enter your name and password and click OK.

You have now made all necessary settings to connect to AOL for the first time. You can work with the AOL software as well as other Internet applications. You'll find additional information in the on-line help of AOL and in AOL's forums.

### 3.1.3 Connecting and disconnecting

Before you can access AOL's services or the Internet, you'll need to dial into AOL. Simply launch AOL, enter your password, and click OK.

If you no longer want to use AOL or the Internet, you should disconnect to save any further connections charges. In AOL, choose Sign Off from the Go To menu, or quit AOL.

## 3.2 Accessing the Internet through a service provider

To be able to access the Internet through your provider successfully, you'll need to configure your computer accordingly.

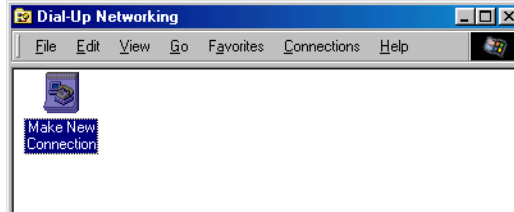
### 3.2.1 Configuring your computer

To configure your computer for accessing the Internet through an ISP successfully, you'll need to know the following:

- Your user name (also called the "PPP user name, Login name").
- The matching password.
- The ISDN dial-in number.

To configure your WEBSHUTTLE II follow these steps:

#### 1. Open Dial-Up Networking in My Computer.

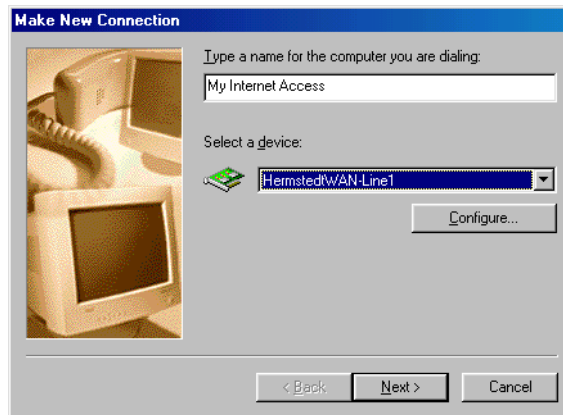


**2. Open Make New Connection.**

If you open Dial-Up Networking the first time, Windows automatically opens Make New Connection for you.

**3. Enter a name, i.e. “My Internet Access.”**

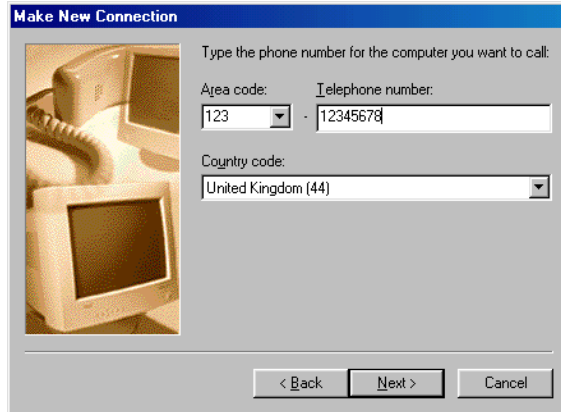
**4. Use the pop-up to select the device “HermstedtWAN-Line1.”**



**5. Click Next.**

**6. Enter the area code, and the phone number your ISP had given you, and choose the appropriate country code.**



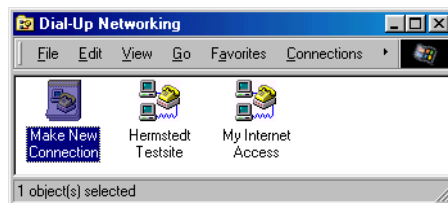


**7. Click Next.**



**8. Click Finish.**

The Dial-Up Networking window should now show an icon of the new connection you have just created.



### 9. Open My Internet Access.

Enter your user name and the password the Internet Service Provider supplied you with.

If you check Save Password here, you never have to enter the password again and the connection to the Internet can be done completely automatically. On the other hand everybody else, who has access to your computer, can get into the Internet using your account (and at your cost!).

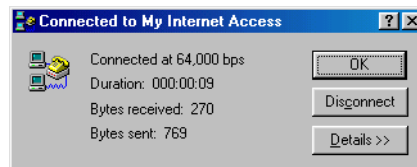


### 10. Click Connect.

Some seconds later you will see the message "Connection established." Now you can launch your favourite web browser application and start surfing the Internet.

If you encounter an error message, please check User name, Password and Phone number. Additional information you may find in 'Troubleshooting tips' on page 51

### 11. Open My Connection again.



### 12. Click Disconnect.

Now you configured your Internet access completely.

### **3.2.2 Connecting and disconnecting**

Before you can access the Internet, you'll need to establish the ISDN connection to your Internet provider. To connect to your provider, open the connection icon in Dial-Up Networking and click Connect.

If you don't need the connection anymore, simply reopen the same icon and click Disconnect. The call is disconnected, and no further charges are incurred.

## **3.3 Internet, and more**

### **3.3.1 Using Internet applications**

Using one of the preceding sections, you should by now have a working connection to the Internet. For example, you can browse the World Wide Web after connecting to your online service or Internet provider.

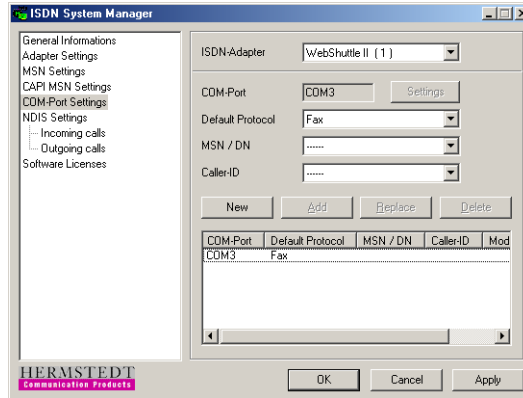
Besides WWW there are a lot of other services you can access through the internet, such as FTP, News, e-mail, IRC, and so on. To use these services, you'll need to configure your computer or install additional software.

Which other Internet services are available to you also depends on your online service or Internet provider. Please refer to the online help of the respective software, or ask your Internet provider.

### **3.3.2 Sending and receiving faxes**

With WEBSHUTTLE II you are able to use communication software which is not designed for digital lines. In most cases these are the various kinds of fax software.

The fax software looks for an analogue modem and this is the way WEBSHUTTLE II pretends to be. Section 'COM Port Settings' on page 38 explains how to configure these analogue connections in the ISDN SYSTEM MANAGER control panel.



Additionally you may enter the number (MSN) the fax software should answer to.

---

# CHAPTER 4

*Reference*



## 4.1 ISDN SYSTEM MANAGER

This chapter explains in detail the features of `ISDN SYSTEM MANAGER` – Hermstedt’s control panel software for controlling and configuring ISDN adapters, ISDN application software, and the accompanying operating system drivers.

The `ISDN SYSTEM MANAGER` is dynamic in a sense that its display and the configuration possibilities do reflect the actual hardware and software situation on a given computer. This chapter shows all elements existing at the time of this writing.

It is absolutely normal, if your system does not show some of the following pages, or different computers of your installation show different displays.

### 4.1.1 Concept

The program window displays three regions:

- The list of pages as an overview on the left.
- The content of each page on the right.
- The buttons at the bottom.

The layout and the size of the program window is static and can not be changed. Clicking a topic of the overview list on the left shows its details on the page to the right. You may switch between pages at your will, the changes are remembered until you try to close the window or click one of the buttons at the bottom.

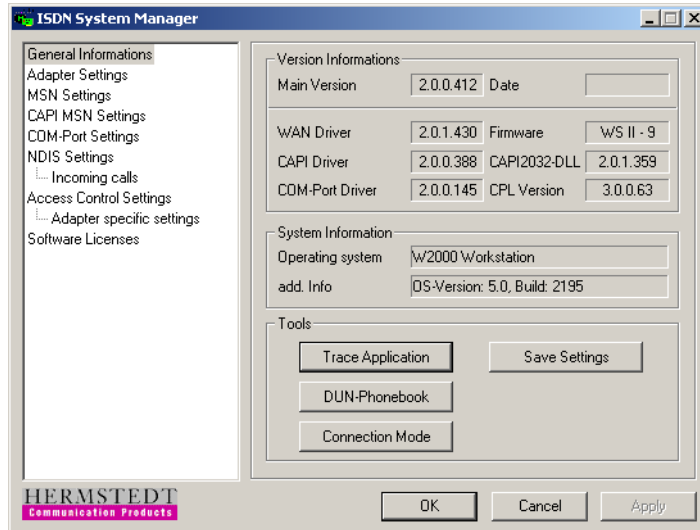
Clicking the OK button closes the `ISDN SYSTEM MANAGER` and saves all changes.

Clicking the Cancel button closes the `ISDN SYSTEM MANAGER` and ignores all changes since the last OK or Apply.

Clicking the Apply button saves all changes without closing the program.

### 4.1.2 General Information

This shows the version info of all involved software modules. If you request technical support, this information should always given.



#### ***Trace Application***

This special function allows to analyze the behavior of your ISDN adapter on a deep technical level. We recommend to use this button only on request of a HERMSTEDT support specialist.

#### ***Save Settings***

Clicking this button saves all configuration data stored inside the ISDN SYSTEM MANAGER to a simple text file. This file may then send to technical support engineers for further investigation.

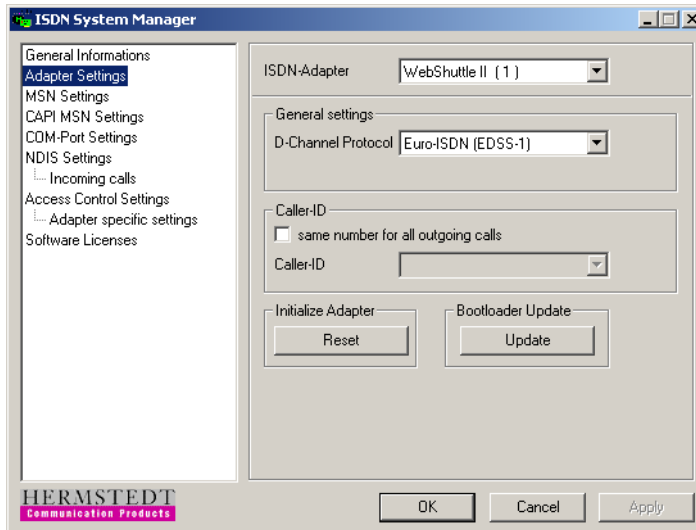
#### ***DUN Phonebook***

Your Windows system contains a phone book, which stores information for Dial-Up Networking. You may display this phone book using this button.



### 4.1.3 Adapter Settings

The basic settings for each ISDN adapter is done here. You may choose each single adapter from the topmost list and then change its configuration.



#### ***D Channel Protocol***

Select an entry of this list to adapt your ISDN adapter to the type of ISDN line you have connected it to. In rare cases, ISDN SYSTEM MANAGER might be unable to determine the D channel protocol used automatically. In this case, please choose the entry for the country you're in.

- If you are in Europe, choose Euro-ISDN (EDSS-1).
- If you are in any other country, please select the country you're in.
- If your country is not listed, please select Euro-ISDN (EDSS-1).

#### ***Caller-ID***

The caller ID is the phone number which is shown to the remote site as your calling number. The same way you are able to accept calls under different MSN, you may tell the remote station you called different sender phone numbers. This allows the called station to identify you as of your caller ID.

Almost ever the caller ID is the same as the MSN, that is your phone number without area code, or part of it, like an extension number assigned with a PBX system.

Normally, you don't need to provide a caller ID at all. However, if your adapter is connected to certain PBX's, to make a call, you'll need to enter the extension number of the PBX's ISDN line.

Check “same number for all outgoing calls” and enter a phone number as caller ID, if all calls made with this adapter should originate from the same phone number.

#### ***Initialize Adapter***

This button allows to “restart” the ISDN adapter and initialize its basic software. If you think a connection “hangs” and nothing goes anymore, you may try this before restarting your computer.

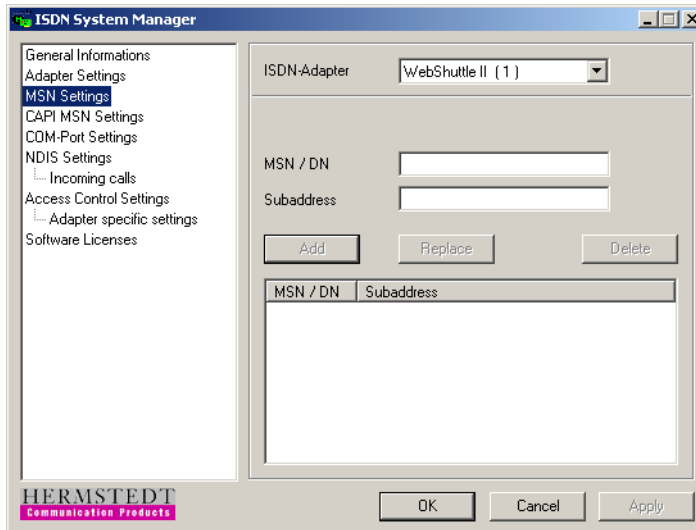
#### ***Bootloader Update***

Some ISDN adapters have integrated firmware in addition to the necessary driver software of the operating system. This firmware may be upgraded using this button. The content of a file from the software installation is copied into an internal memory chip. This upgrade is a special action and should be done on demand only.

During the update you must not unplug the USB cable of a WEBSHUTTLE II. The device may get damaged. Its two LEDs are blinking rapidly during this process.

#### **4.1.4 MSN Settings**

For each adapter this list shows the MSN/subaddress combination incoming calls are accepted for. You may choose each single adapter from the topmost list and then change its configuration.

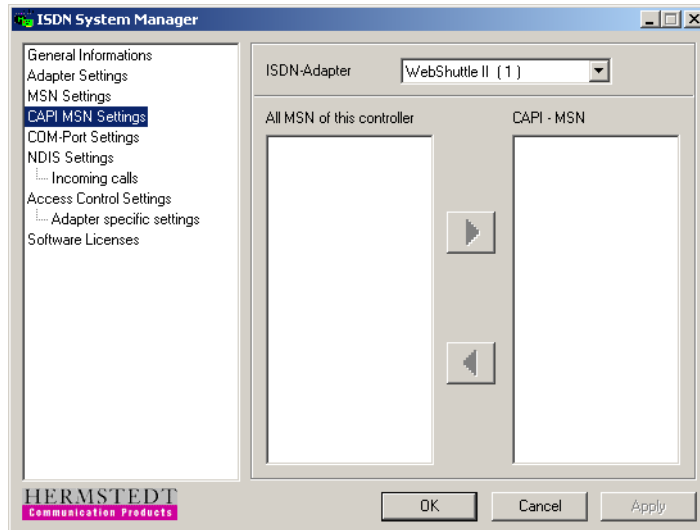


To add a MSN or a MSN/subaddress combination to the list, enter the MSN into the MSN box, the subaddress in the Subaddress box, and choose the adapter you want to assign the number to. Leave the Subaddress box empty if you don't want to use a subaddress. Click Add to add this entry to the list of known MSN. To remove an entry, select the entry in the list and click Delete. To change an entry, select it in the list, make all desired changes, and finally click Replace.

#### 4.1.5 CAPI MSN Settings

From all assigned MSN/subaddress combinations of an ISDN adapter you may elect some for accepting calls of CAPI-based software. You can choose each single adapter from the topmost list and then change its configuration.

Select a MSN of the left list and click the Right Arrow button to move it to the CAPI list. Removing a MSN from the CAPI list is done by selecting it and then clicking the Left Arrow button.

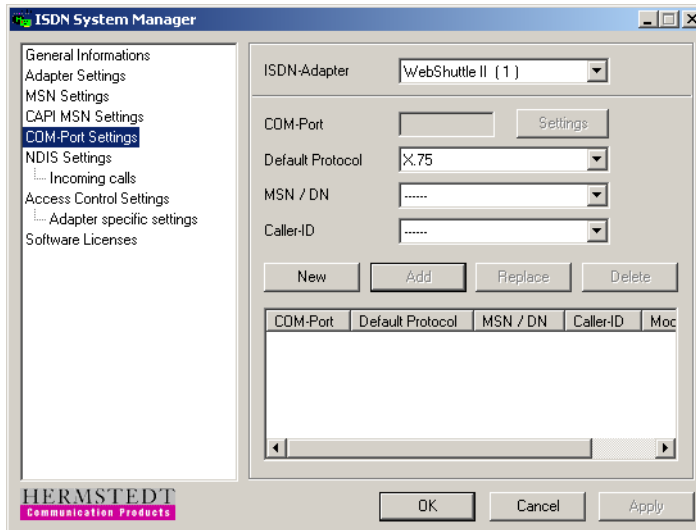


#### 4.1.6 COM Port Settings

Hermstedt ISDN adapters provide you with one or more virtual Communications Ports. A virtual Communications Port works just like a conventional, serial communications port, and can be used just like one. Instead of being a piece of hardware built into your computer, a virtual Communications Port exists only in software, and allows you to establish connections over ISDN.

Using virtual Communications Ports, you can work with conventional software like terminal emulators, fax software, or the software of an on-line service with ISDN, even if these programs cannot use CAPI. The Hermstedt software provides these programs the notion of a modem connected through a serial port.

You may choose each single adapter from the topmost list and then change its configuration.



### ***COM-Port***

Use this box to select the desired COM port number.

### ***Default Protocol***

Select the B channel protocol to be used by default from this box.

### ***MSN-Number***

Select the MSN/Subaddress to accept calls with.

### ***Caller-ID***

Enter the desired caller ID into this box. If you have checked the “same Caller-ID for all outgoing calls” in Adapter Settings, the number entered there will be used.

### ***Adding, deleting, or changing a virtual Communications Port***

Before you can use a virtual Communications Port, you’ll need to add it, and possibly make some settings. Usually, you’ll add one port per application you plan to use. For example, if you plan to use both a terminal emulator and a fax software, you’ll add two ports.

For adding a port click New to create a new port, make the desired settings in the COM-Port, Default Protocol, MSN-Number, and

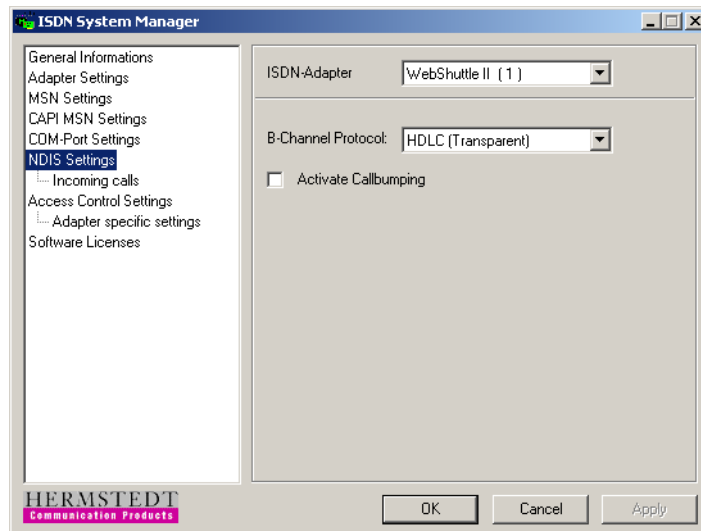
Caller-ID boxes, and click Add. To remove a port, select the port from the list, and click Delete. To change a port, select it in the list, make all desired changes, and finally click Replace.

#### 4.1.7 NDIS Settings

You may choose each single adapter from the topmost list and then change its configuration.

##### ***B Channel Protocol***

Select the B channel protocol to be used with Remote Access Services. Usually, HDLC (the default) is correct.



##### ***Activate Callbumping***

When this function is activated, you can stay connected to the Internet using both channels whilst still being reachable by phone.

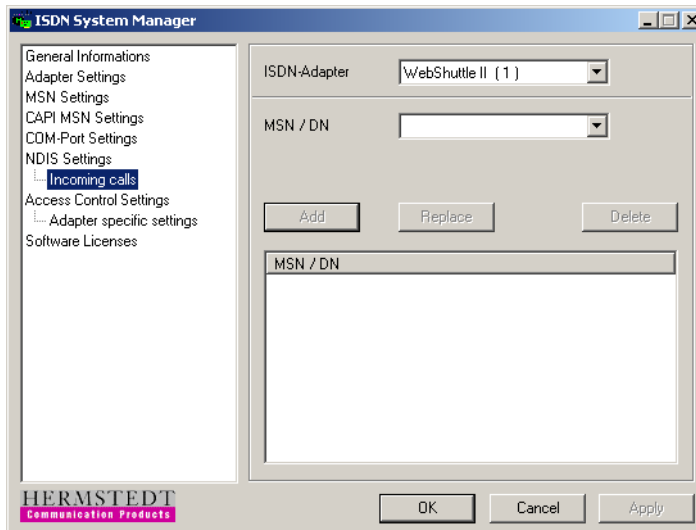
If you receive a call whilst connected to the Internet using both channels, one channel is released for the incoming call.

If you want to make a phone call whilst connected to the Internet using both channels, you lift up the receiver (busy tone can be heard) and replace it to signal WEBSHUTTLE II to release a channel for an out-

going call. WEBSHUTTLE II frees the second channel, and the line is ready to use for a phone call.

#### 4.1.8 Incoming Calls

Use the Incoming Calls panel to set the MSN calls for Remote Access Services or Dial-Up Networking should be accepted under.

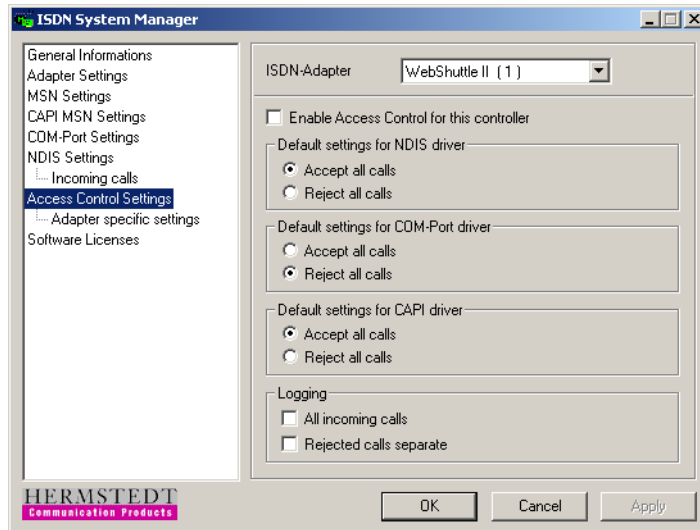


To add a MSN to the list, enter the MSN into the MSN box and click Add. To remove an entry, select the entry in the list and click Delete. To change an entry, select it in the list, make the desired change, and finally click Replace.

#### 4.1.9 Access Control Settings

This page controls default settings for all types of connections. You may decide to accept and/or reject calls at all. These settings override all settings done on the special pages dedicated to each connection type.

You may choose each single adapter from the topmost list and then change its configuration.



### ***Enable Access Control for this controller***

The “main switch” for this panel. Check this box to activate all settings made on this page.

### ***Default settings for ...***

This is the most global setting for the given adapter. If you allow all incoming calls, any other settings including MSN or subaddress limitations are overridden and all incoming calls are accepted.

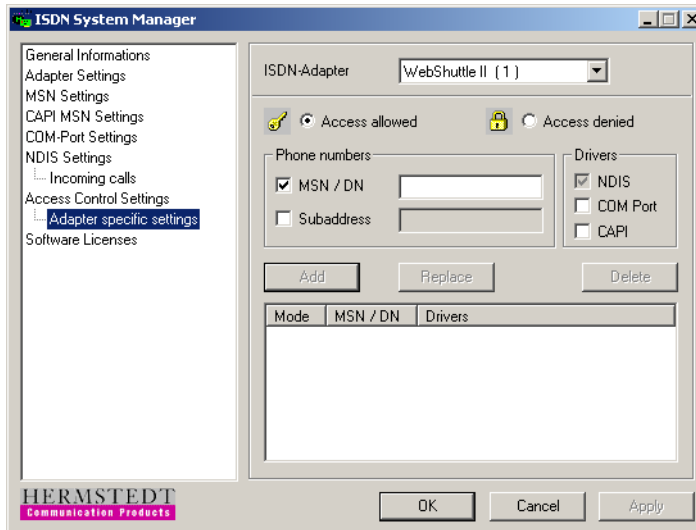
### ***Logging***

Here you may select the kind of messages to be included into the logging file.

## **4.1.10 Adapter Specific Settings**

This page allows to be more specific regarding the options of the previous page. If the on/off switches of the previous page do not apply to your situation you can use this settings to define the behavior of each adapter in detail. You may choose each single adapter from the top-most list and then change its configuration.





You set the properties “Access,” “Phone numbers,” and “Drivers” to a combination of values you need and add this to the list below. Then this properties are controlling the behavior of the given adapter.

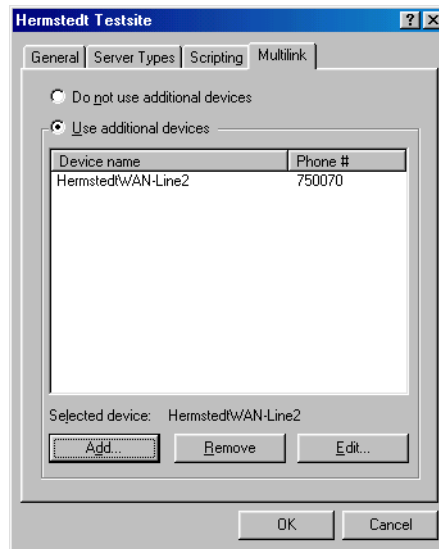
To add a combination to the list click Add. To remove an entry, select the entry in the list and click Delete. To change an entry, select it in the list, make the desired changes, and finally click Replace.

## 4.2 Using Dial-Up Networking

### 4.2.1 Getting into the Internet or an Intranet (Windows 98/Me)

WEBSHUTTLE II can be used with Windows’ Dial-Up Networking to connect to the Internet or an Intranet. Simply create a new connection using Create New Connection in Dial-Up Networking and choose one of the HermstedtWAN-Lines. Section 3.2 on page 25 shows the few necessary steps in detail.

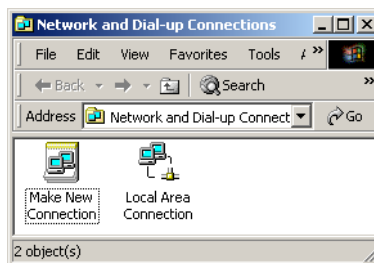
If your Internet Service Provider supports multilink connections, you can use both lines of the WEBSHUTTLE II. This doubles your bandwidth and cuts downloading time to half. This is configured in the Properties window of the connection. (Right-click a connection icon to access its properties.)



A helpful feature with multilink connections is the Callbumping option described in ‘Activate Callbumping’ on page 40. Additional information about Dial-Up Networking and multilink connections can be found using the online help in Windows.

#### 4.2.2 Getting into the Internet or an Intranet (Windows 2000)

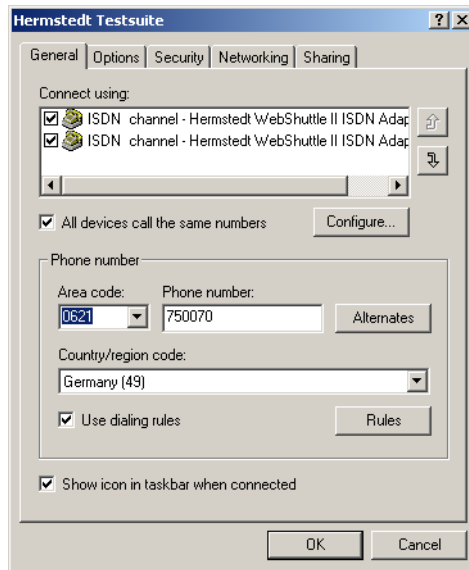
WEBSHUTTLE II can be used with Windows 2000 Network and Dial-up Connection to connect to the Internet or an Intranet. Simply create a new connection using Make New Connection in Network and Dial-up Connection and choose the offered connections.



If your Internet Service Provider supports multilink connections, you can use both lines of the WEBSHUTTLE II. This doubles your band-

width and cuts downloading time to half. This is configured in the Properties window of the connection.

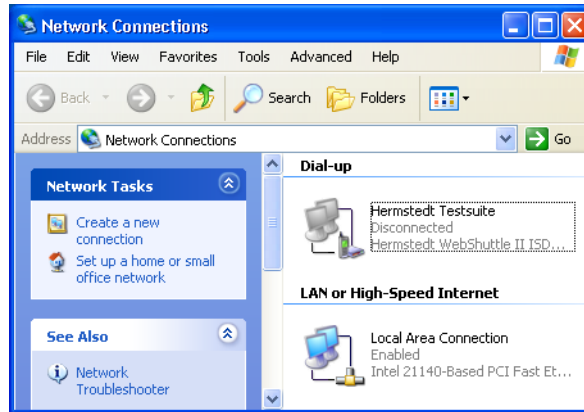
Check both ISDN channels as connection and let all devices call the same number:



A helpful feature with multilink connections is the Callbumping option described in 'Activate Callbumping' on page 40. Additional information about Dial-up and multilink connections can be found using the online help in Windows.

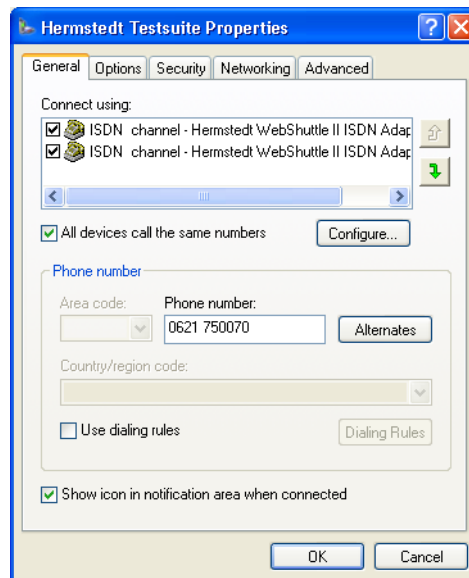
### 4.2.3 Getting into the Internet or an Intranet (Windows XP)

WEBSHUTTLE II can be used with Windows XP Network Connections to connect to the Internet or an Intranet. Simply create a new connection using Create New Connection in Network Connections and choose the offered connections.



If your Internet Service Provider supports multilink connections, you can use both lines of the `WEBSHUTTLE II`. This doubles your bandwidth and cuts downloading time to half. This is configured in the Properties window of the connection.

Check both ISDN channels as connection and let all devices call the same number:



A helpful feature with multilink connections is the Callbumping option described in ‘Activate Callbumping’ on page 40. Additional information about Dial-up and multilink connections can be found using the online help in Windows.

#### **4.2.4 Connecting and Disconnecting**

To access the Internet via WebShuttle you first have to establish a connection to your Internet Service Provider. This can be achieved in two ways:

- Open the connection (Windows 98/Me: Dial-Up Networking, Windows 2000: Network and Dial-up Connection, Windows XP: Network Connections), enter your password and click Connect.
- If you checked “Connect to the internet using a modem” on the Connect tab of the control panel Internet, you just need to start your Internet software, i.e. a web browser, and the connection is established automatically by Windows.

When you do not need the Internet access any longer you should cut the connection to avoid unnecessary charges. Disconnecting can be done by these ways:

- Open the connection (Windows 98/Me: Dial-Up Networking, Windows 2000: Network and Dial-up Connection, Windows XP: Network Connections), and click Disconnect.
- Click the small Dial-Up Networking icon in the task bar and choose Disconnect.
- If you checked “Disconnect if idle for ... minutes” in the Modem Connect options windows of the control panel Internet, the connection is dropped automatically after the given time has expired without any network activity.

#### **4.2.5 Using a Dial-Up Server**

The Dial-Up Server allows to set up your computer as a server, to which other user can connect and i.e. access data on your harddisk. Dial-Up Server is a part of the Windows software, which is not automatically installed during the default installation process. You can install it separately using the Add/Remove Program control panel.

To use one of the HermstedtWAN lines for the Dial-Up Server, you have to set an MSN/Subaddress for incoming calls. This is set in the control panel ISDN SYSTEM MANAGER, details can be found in section 'MSN Settings' on page 36.

Then choose the menu option Connection | Dial-Up Server in the Dial-Up Networking window. Windows' online help gives you more information on this topic.

### **4.3 LED signals**

Your WEBSHUTTLE II has two LEDs informing you of the current state of your WEBSHUTTLE II. Inside the ISDN port is an orange-coloured LED, at the other side a yellow LED.

#### ***The yellow LED is lit***

WEBSHUTTLE II has just been connected properly to the computer.

#### ***The yellow LED is lit and the orange-coloured LED is pulsing***

WEBSHUTTLE II is ready to be used. There is currently no active connection.

#### ***The yellow and the orange-coloured LEDs are lit***

There is an active connection. Three seconds after establishing a connection a single blinking of the orange-coloured LED shows a 1-channel-connection, blinking twice a 2-channel-connection.

---

# APPENDIX

*Troubleshooting tips*  
*Specifications*





## A.1 Troubleshooting tips

If your WEBSHUTTLE II does not work as expected, please use the following check list to isolate the problem and solve it:

### A.1.1 Make sure WEBSHUTTLE II is connected correctly

#### *None of WEBSHUTTLE II's LEDs are lit*

The WEBSHUTTLE II is not connected properly to the computer. Make sure all connectors are plugged in correctly. Please refer to chapter 2 starting on page 5 for instructions. Try to remove the USB plug and reinsert it after a few seconds.

#### *Only the yellow LED is lit*

WEBSHUTTLE II is able to contact its software on your computer, but there is no connection to the ISDN. Please check the ISDN cable and the ISDN wall outlet.

### A.1.2 Make sure WEBSHUTTLE II and your ISDN line are working

Before you look for the problem in the program used or at your Internet provider, you should first make sure that WEBSHUTTLE II and your ISDN line are working properly and that you can make connections. Follow the instructions in section <The first connection> auf Seite 13.

If you have established the connection to the test server successfully, your WEBSHUTTLE II and your ISDN line are working properly.

If you receive status messages like “Busy,” please try to connect again in a few minutes.

If error messages such as “Invalid number” or “Please check connection to the ISDN network,” appear, there might be a problem with your ISDN line. Check that you have properly connected WEBSHUTTLE II to the ISDN outlet (see section 2.2 on page 7) and that you have selected the correct D channel protocol for your type of ISDN line (see section 4.1.2 on page 34).

If you have connected WEBSHUTTLE II to an internal S<sub>0</sub> port of a PBX, you'll probably need to dial a “0” or “9” to get an outside line. Additionally, some PBX systems require you to provide a MSN for outgoing calls also. Please refer to section 4.1.3 on page 35 for details.

### **A.1.3 Check the connection to your Internet provider**

If you can connect to the test server, you should now check the connection to your Internet service provider.

If you are dialling into the Internet through AOL, please refer to sections 3.1 on page 20 to make sure the software is configured correctly. If you had to dial a “0” or “9” prefix for an outgoing line when connecting to the test server, you will need to do so in your on-line service’s software as well.

Make sure you have entered the phone number, your user name, and your password correctly. Check that the caps lock key isn’t pressed when entering the password.

If you still cannot connect to your Internet provider, the problem most probably at your providers dial-in server.

### **A.1.4 I’m having problems sending or receiving faxes**

#### ***I neither can send nor receive faxes***

Check that the fax software is configured correctly for the virtual communication port of your WEBSHUTTLE II.

If you have connected your WEBSHUTTLE II to an internal S<sub>0</sub> port of a PBX, you’ll probably need to dial a “0” or “9” as a prefix to get an outside line. Also, in the fax software settings, you might need to change the Detect option from “Dial and Busy tone” to “Busy tone.”

#### ***I can’t receive faxes***

Check that the fax software is configured correctly to receive faxes.

Additionally, you’ll need to configure WEBSHUTTLE II to either take all analog calls, or to take only calls for your fax number. Please refer to <COM Port Settings> auf Seite 38 for further details.

### **A.1.5 Technical support and software updates**

If you are still unable to use your WEBSHUTTLE II even after checking the above points, please contact the dealer where you bought your WEBSHUTTLE II. You can also contact our international distributors,

or Hermstedt AG or one of its subsidiaries around the world for assistance: you'll find the addresses in the front cover of this manual.

To obtain the newest software, you can access our Web server at:

---

**Hermstedt WWW-Server**

---

<http://www.hermstedt.com/>

---

You can also download the latest software updates from our support server. Simply use the parameters below:

---

**Hermstedt Support-Server**

---

Phone number +49 621 750070

---

User name "WebShuttle"

---

password "Guest"

---

Web-Browser ftp://ftp.hermstedt.de/

---

FTP program Server: ftp.hermstedt.de  
User name: "ftp", "anonymous" or "WebShuttle"  
Password: "Guest"

---

## A.2 Technical Specifications

---

**Interfaces** USB cable  
ISDN S<sub>0</sub>: RJ45

---

**Protocols** PPP, MLP, FTP, TCP/IP, EDSS1

---

**Dimensions** 108 x 50.5 x 33 mm (4.25 x 2 x 1.3 inches)

---

**Weight** 62 g

---

**Power consumption** ≤1 Watts

---

**Certificates**  **0682**

---



---

# INDEX



Access Control Settings 41  
Adapter Settings 35  
Adapter Specific Settings 42  
AOL 20

B Channel Protocol 39-40  
Bootloader Update 36

Callbumping 40  
Caller-ID 35, 39  
CAPI 37  
CAPI MSN Settings 37  
COM Port Settings 38  
COM-Port 39  
Connecting WEBSHUTTLE II 7

D Channel Protocol 35  
Default Protocol 39  
Default settings 42  
Dial-Up Networking 11, 34, 41  
DUN Phonebook 34

Enable Access Control 42  
Euro-ISDN (EDSS-1) 35

fax (sending and receiving) 29  
firmware 36  
First connection 13  
FTP 29

General Information 34

HDLC 40  
HermstedtWAN 26

Incoming calls 41  
Initialize Adapter 36  
Internet service provider 19, 25  
ISDN cable 7  
ISDN dial-in number 25  
ISDN outlet 7  
ISDN SYSTEM MANAGER 33

LED signals 48  
Logging 42

Mac OS 3  
Macintosh 3  
Make New Connection 13, 26  
MSN 35-37, 41  
MSN Settings 36  
MSN-Number 39  
multilink 43-45

NDIS Settings 40

Packing list 3  
PBX 36  
PPP user name 25

Remote Access Services 41

Save Settings 34  
Solving problems 3  
Subaddress 36

Technical Specifications 3  
Technical support 34  
Trace Application 34

USB cable 7  
USB hub 7  
User name 25



Virtual Communications Ports 38

Windows 2000 7, 44

Windows 98 11, 43

Windows Me 11, 43

Windows XP 7, 45

WWW 29

HERMSTEDT

**Communication Products**