

ISDN - USB

For Win 98

USER'S MANUAL

TABLE OF CONTENTS

Installation Procedure for Windows 98:

- Chapter 1** Install ISDN-USB driver
- Chapter 2** Setup "Dial-Up Networking"
- Chapter 3** Install ISDN-USB driver of fax and data modem
- 3.1 Introduction
 - 3.2 Fax
 - 3.3 MSN
 - 3.4 Data Modem
 - 3.5 Installation FaxComm+ Procedure
 - 3.6 Installation note for HyperTerminal
 - 3.7 Installation note for WINFAX Pro8.0
 - 3.8 Installation note for Super Voice
 - 3.9 Installation note for Microsoft FAX
-

Chapter 1 Install ISDN-USB driver

<Step01> First Plug ISDN-USB into USB port. System will detect ISDN-USB automatically, then click 



<Step02> Click 




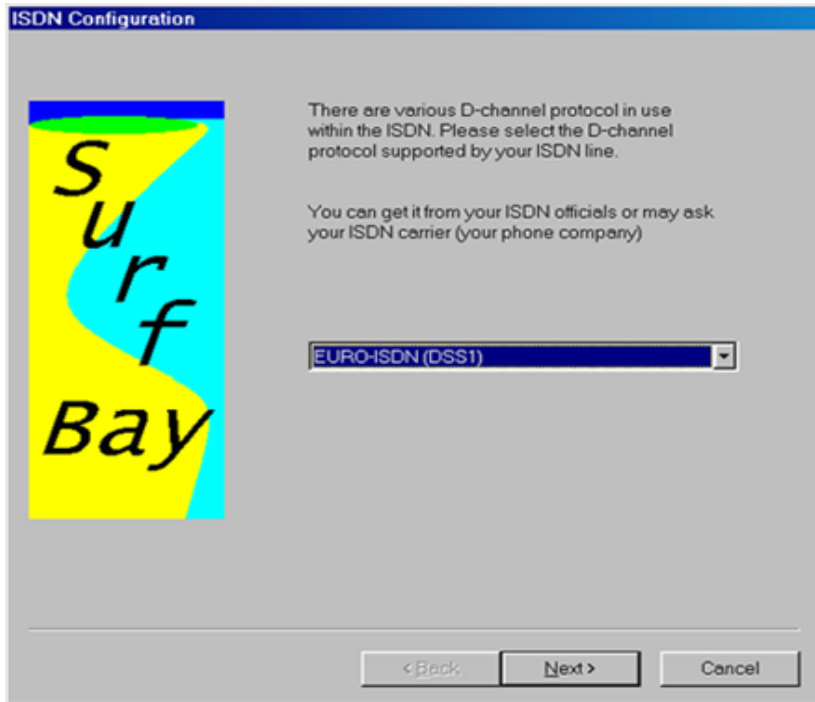
<Step03> Select CD-ROM drive, then click 




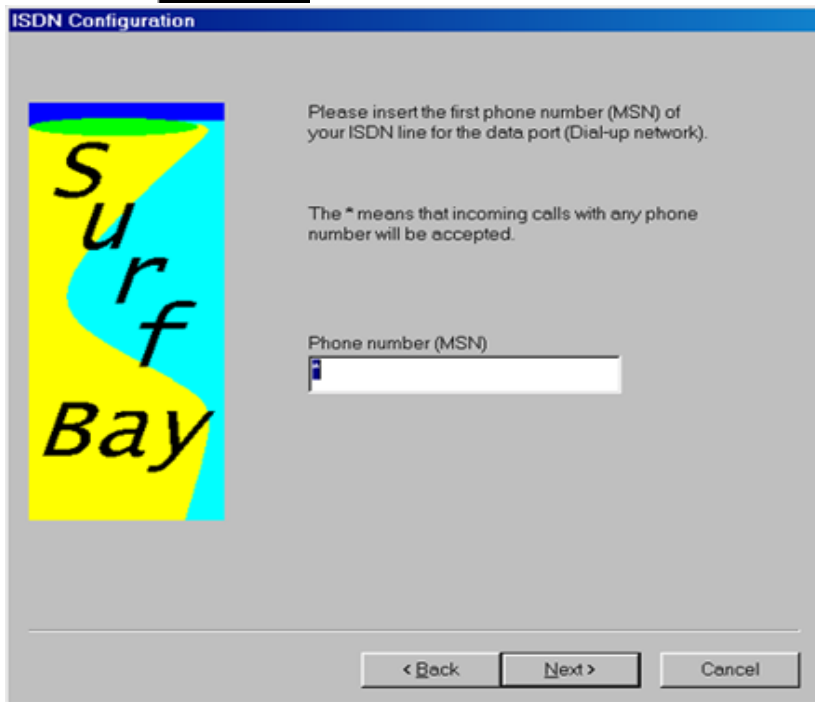
<Step04> Click 




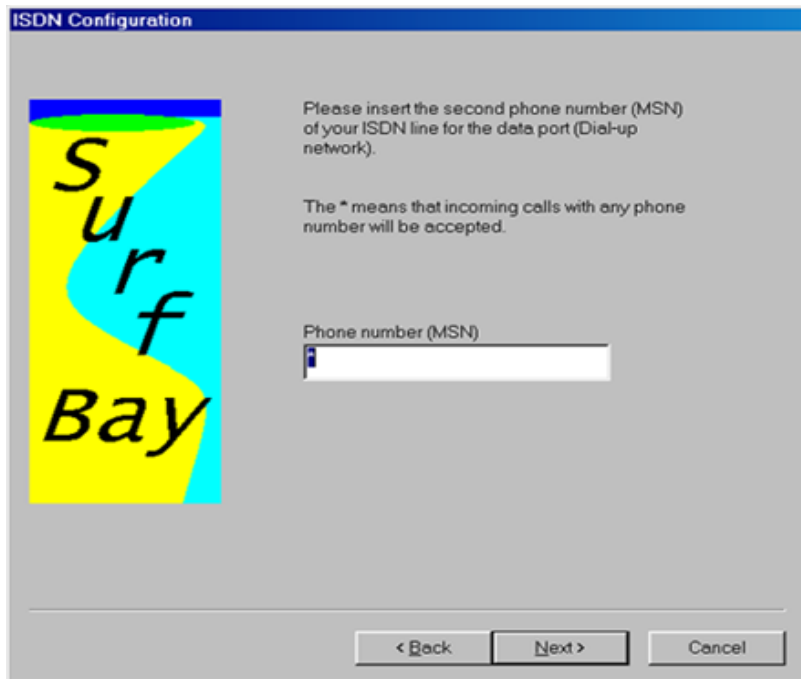
<Step05> Select the appropriate protocol for your local ISDN network, then click 



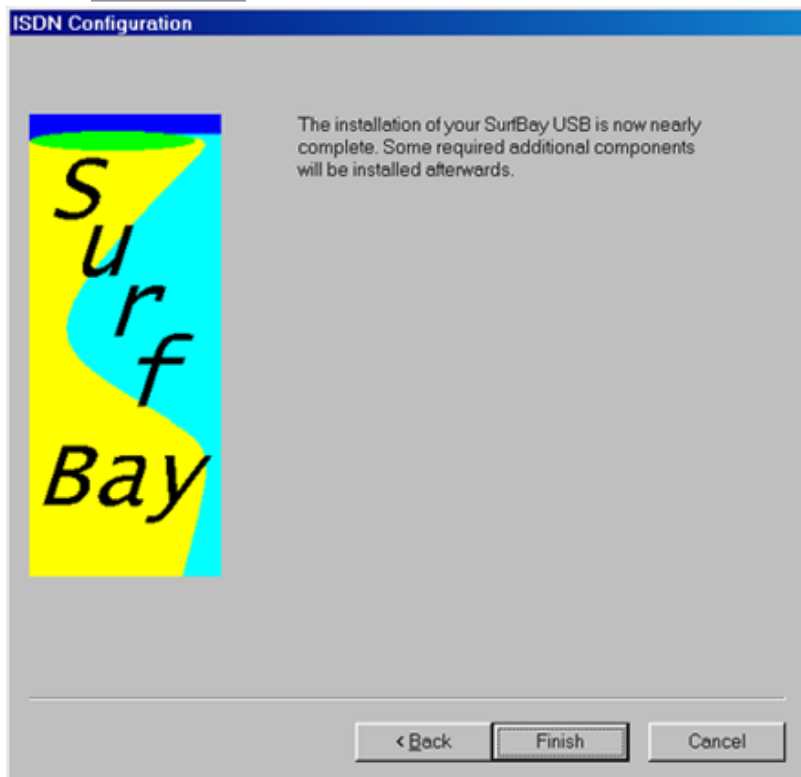
<Step06> Keep default or change the number for your ISDN line, then click 



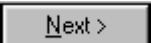
<Step07> Keep default or change the number for your ISDN line, then click 

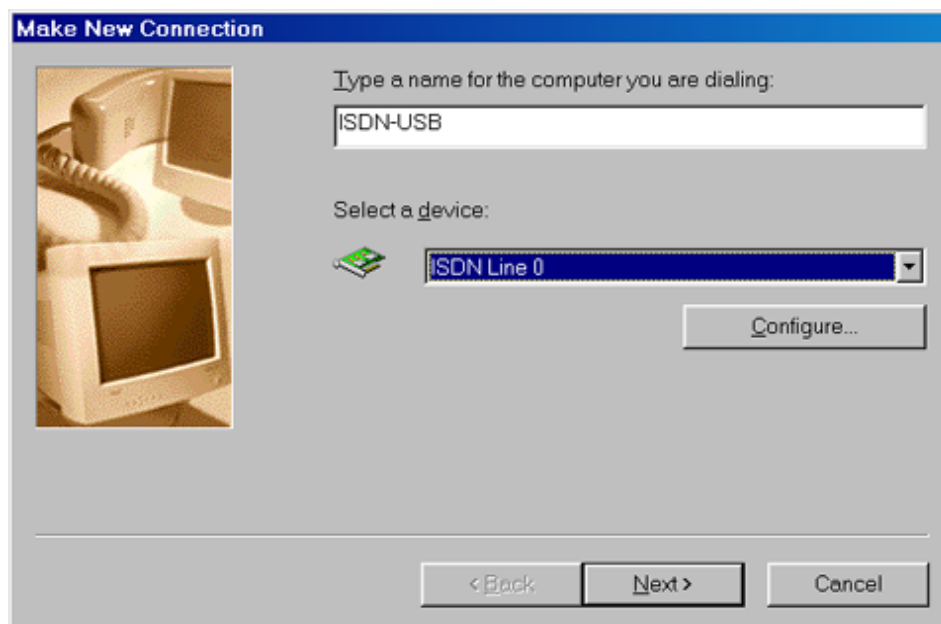


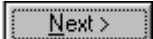
<Step08> Click 

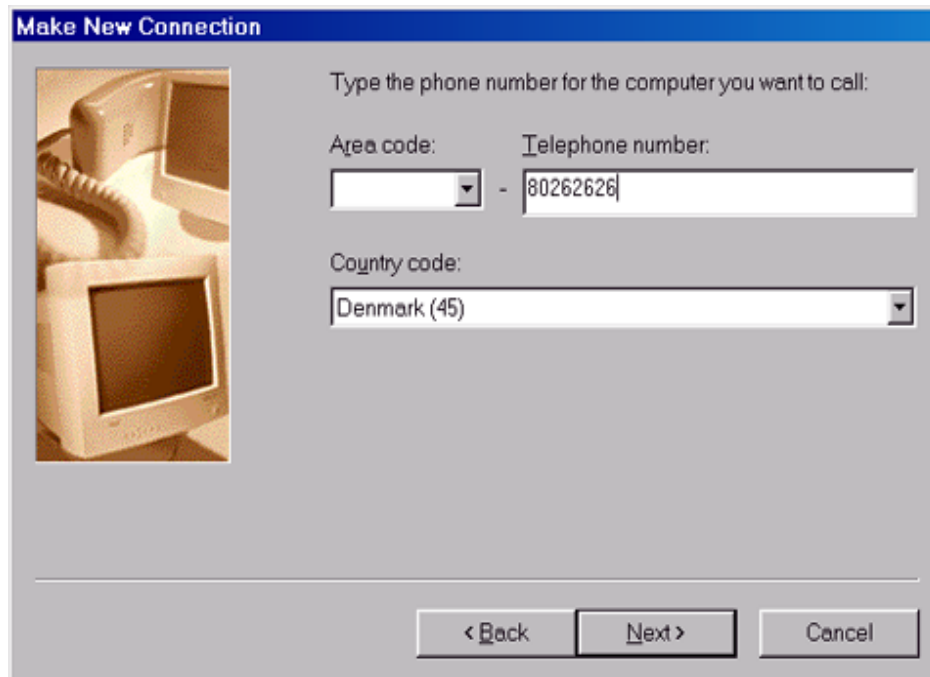


Chapter 2 Setup "Dial-up Networking"

<Step01> Select Programs -> Accessories -> Communication -> Dial-up Networking
-> Click "Make New Connection" and choice the ISDN Line0,
then click 



<Step02> Enter the phone number of ISP for internet access,
then click 



Make New Connection

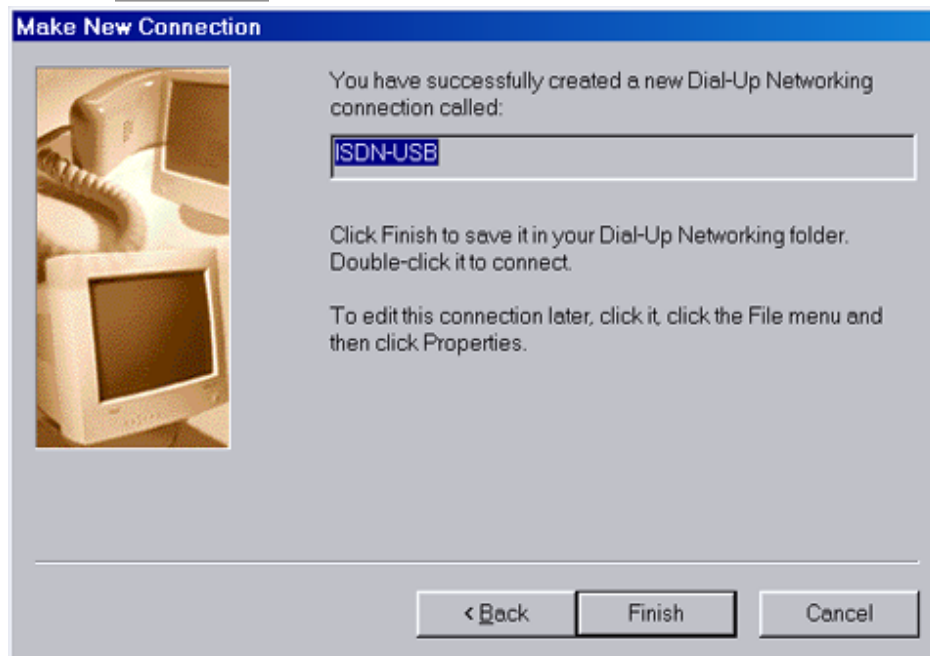
Type the phone number for the computer you want to call:

Area code: - Telephone number:

Country code:

< Back Next > Cancel

<Step03> Click 





Make New Connection

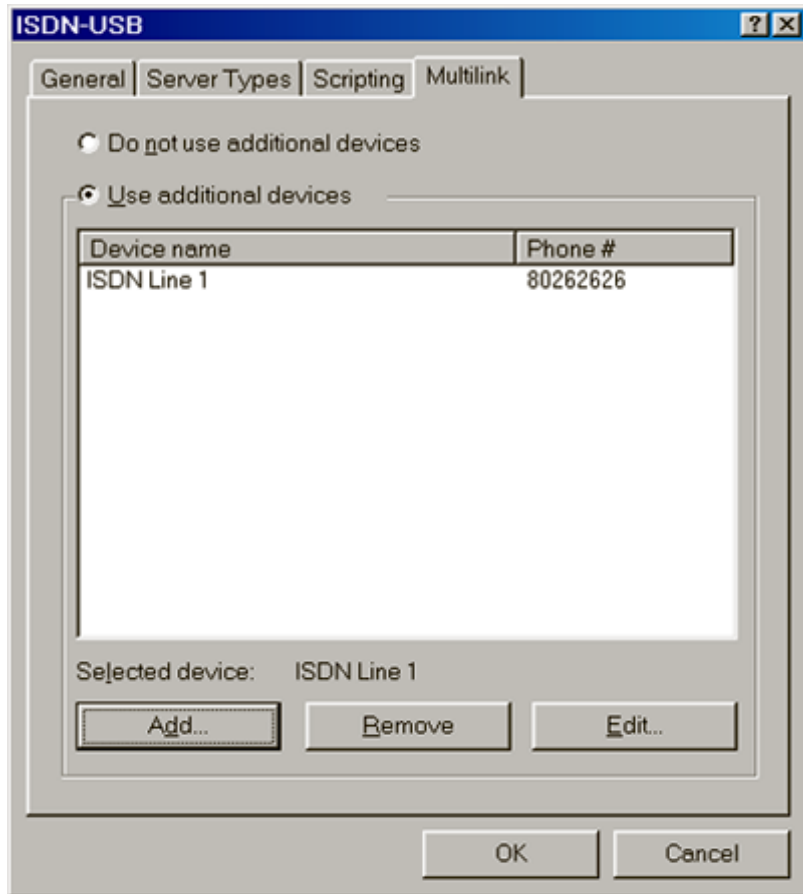
You have successfully created a new Dial-Up Networking connection called:

Click Finish to save it in your Dial-Up Networking folder. Double-click it to connect.

To edit this connection later, click it, click the File menu and then click Properties.

< Back Finish Cancel

<Step04> To make a connection with 128Kbps under Windows98, you need to use the additional devices. Enter Dial-up Networking -> your connection icon -> Properties -> Multilink -> click  -> Select "ISDN Line1" -> click 



Chapter 3 Install ISDN-USB driver of fax and data modem

3.1 Introduction

FaxComm+ emulates an analogue Fax G3 modem and an analogue data modem in the PC. After installation you may select the FaxComm+ modem as the Fax or Data modem for the application software.

3.2 Fax

FaxComm+ may send and receive faxes to and from any analogue fax machine in the ISDN or analogue telephone network.

It supports fax protocols V.21, V.27ter, V.29, V.17, V.33 and T.30 with speeds from 300 to 14,400 bits per second and Class 1 as interface to applications speed up to 9,600 bps.

FaxComm+ is compatible with different fax Class 1 applications, for example:

- Microsoft Exchange
- Microsoft Outlook
- Win Fax PRO 8.x by Symantec Corporation

The hardware recommended for running fax G3 modulation / demodulation with speeds up to 14,400 bits per second is Intel 486 100MHz.

3.3 MSN

If an incoming call occurs the FaxComm+ may accept it on a specific ISDN phone number (MSN). Please enter the MSN in the appropriate configuration window. If you leave the MSN blank any incoming call from an analogue device will be accepted regardless of the called MSN.

You can find the MSNs assigned to your ISDN lines in your ISDN subscription documents. Subscriber numbers must be entered without the area code/trunk code.


3.4 Data Modem

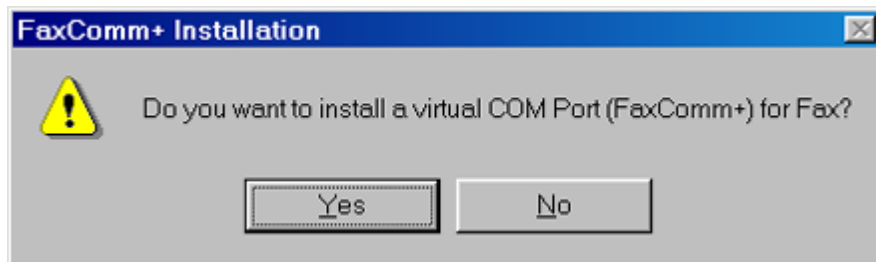
FaxComm+ configures new virtual COM port and makes it possible to use broad range of modem communication programs. Additionally allows to bring analogue dial-up connectivity to Microsoft applications - MS Outlook, MS Exchange, MS Fax, MS Internet Explorer and HyperTerminal.

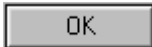
Analogue data modem protocols of FaxComm+ are as follows: V.23, V.22, V.22bis, V.32 and V.32bis with speeds from 600 to 14,400 bps, V.42 for error correction. The hardware recommended for running data modem with speeds up to 14,400 bits per second is Intel 486 100MHz.

FaxComm+ in data modem mode needs for upper modem an application such as HyperTerminal, MS Exchange, MS Internet Explorer or the like. You can test FaxComm+ with any terminal program (for example: HyperTerminal).

3.5 Install FaxComm+ Procedure

<Step01> Enter Start -> Programs -> ISDN Utilities -> click "FaxComm+ Installation", then click 

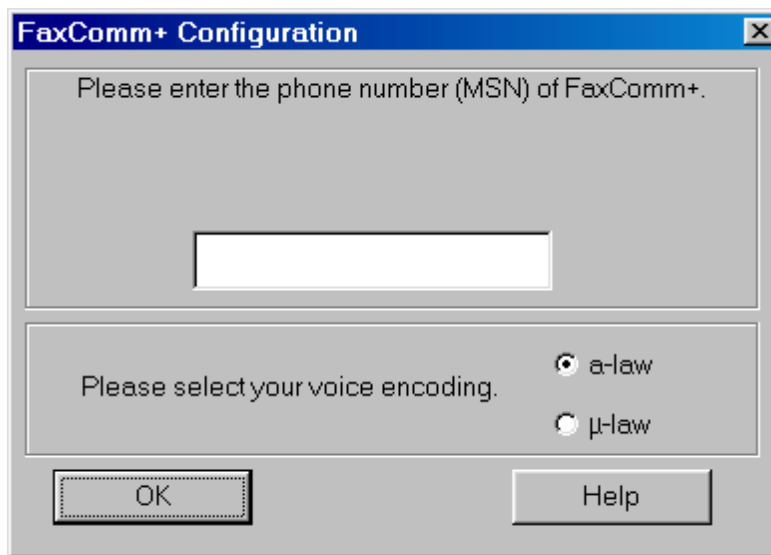


<Step02> Leave the phone number blank or give the specific ISDN phone number, and select your voice encoding a-law or μ -law according to your ISDN central office offering, then click .

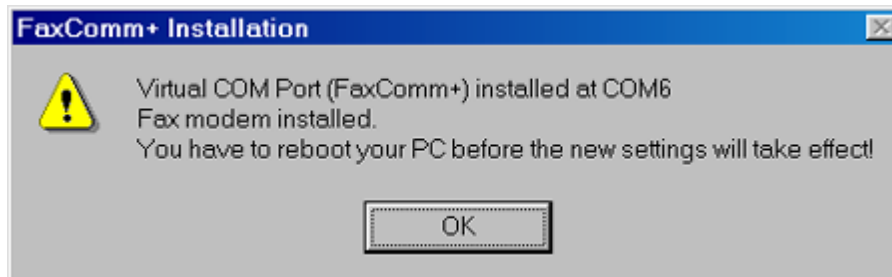
The following table provide some information about a-law / μ -law settings:

a-law	European Country	China
μ -law	Japan	Taiwan

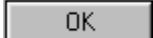
The best way to decide the a-law or μ -law is to check with local central office.

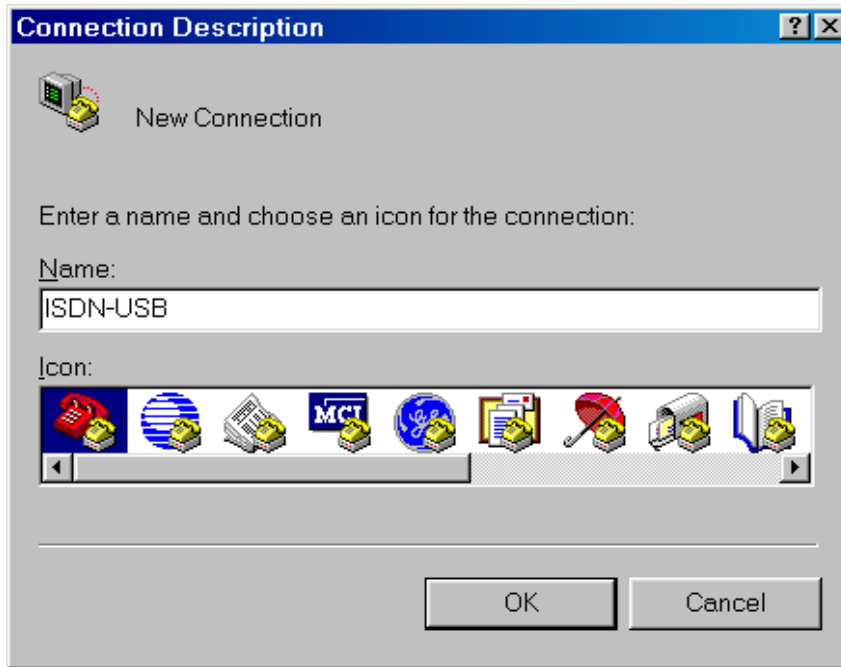



<Step03> Click  and reboot your PC.

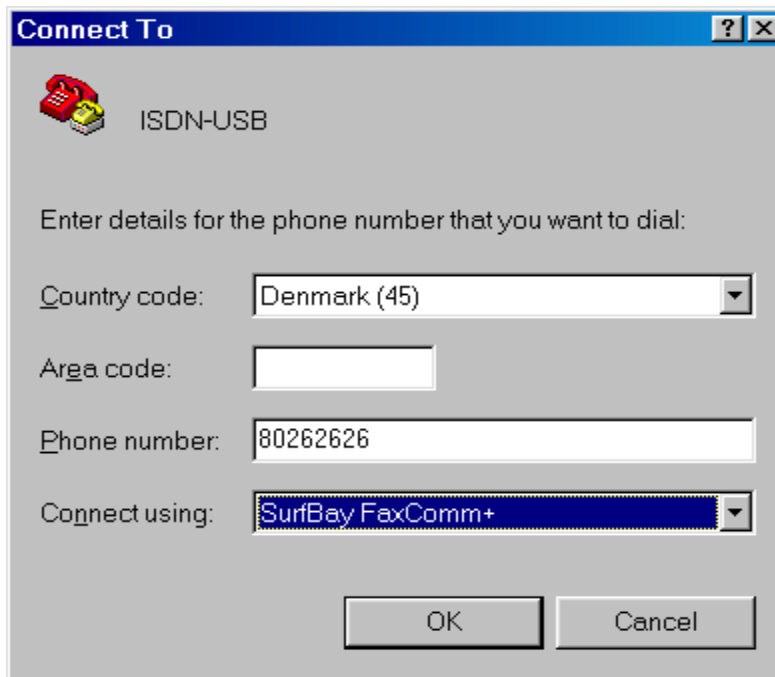


3.6 Installation note for HyperTerminal

<Step01> Enter Start -> Programs -> Accessories -> Communications -> Click HyperTerminal -> Select and Click "Hypertrm" to create new terminal, then click 




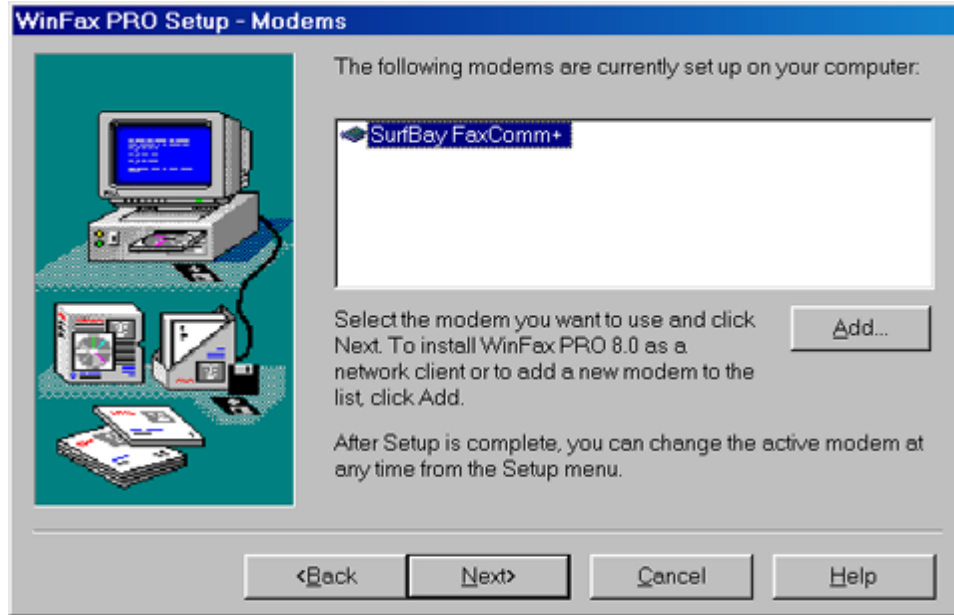
<Step02> Select "SurfBay FaxComm+" and click 



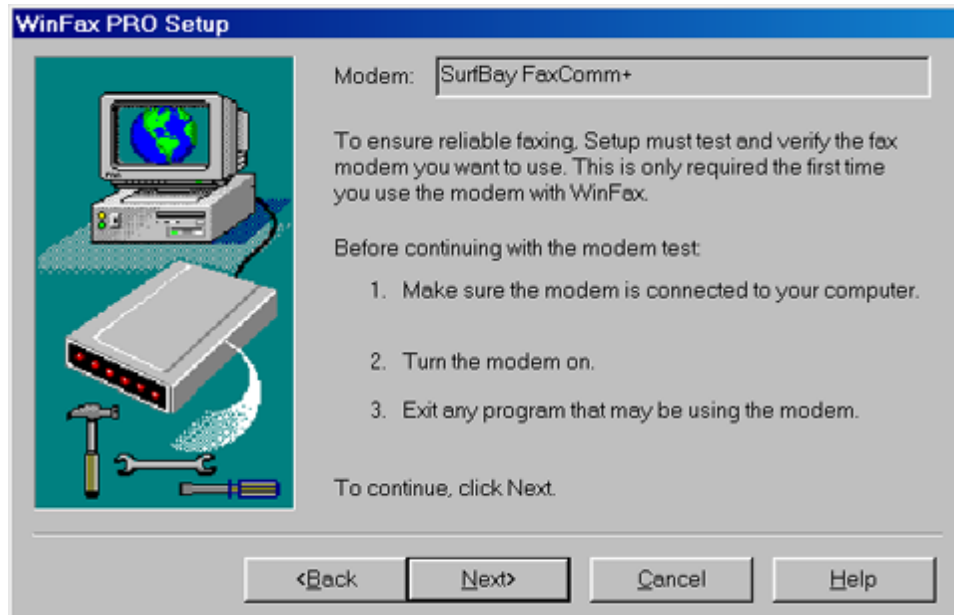
3.7 Installation note for WINFAX Pro Version8.0

ISDN-USB shall be pulg-in USB port with FaxComm+ installed before starting to setup WINFAX.

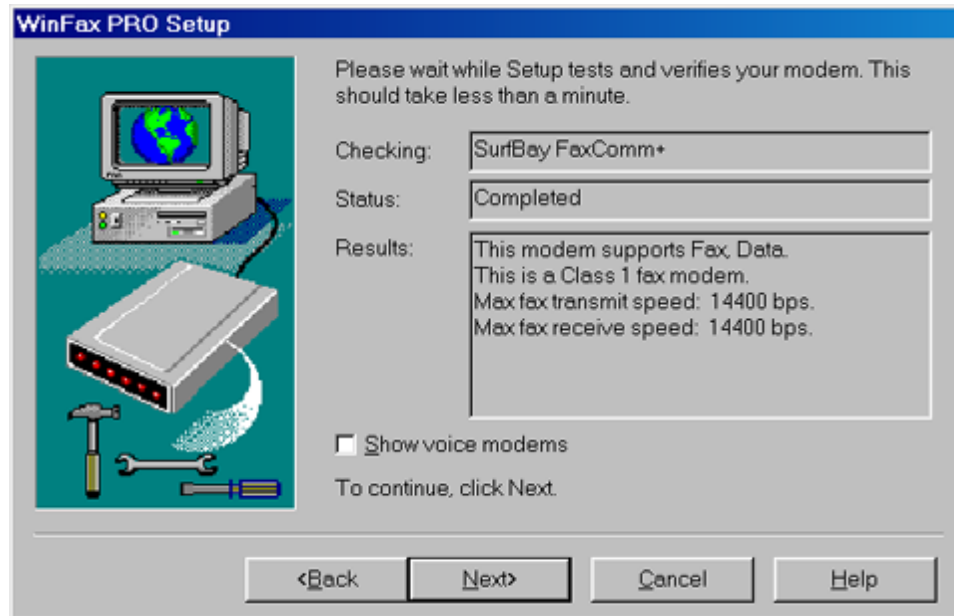
<Step01> During the setup you will see the screen as below. Select the "SurfBay FaxComm+" and click 




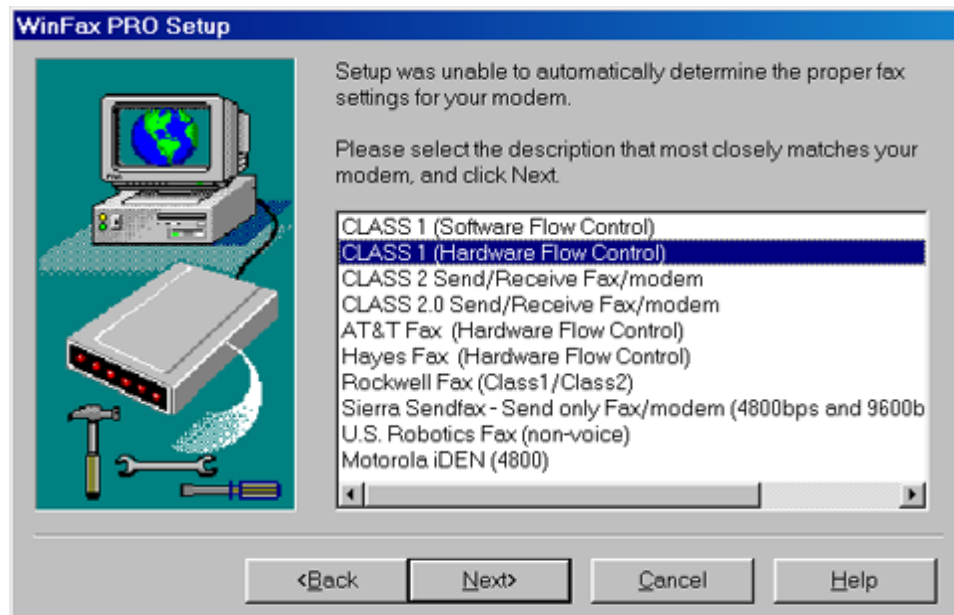
<Step02> Click 



<Step03> Click 



<Step04> Select "CLASS1 (Hardware Flow Control)", and click  and then follow all of instructions to finish the setup.



3.8 Installation note for Super Fax

To install FaxComm+ as above description first, and setup Super Voice. It will check modem port with FaxComm+ automatically. Then you can send or receive fax via Super Fax service.

*Note: Don't use super terminal as data modem.

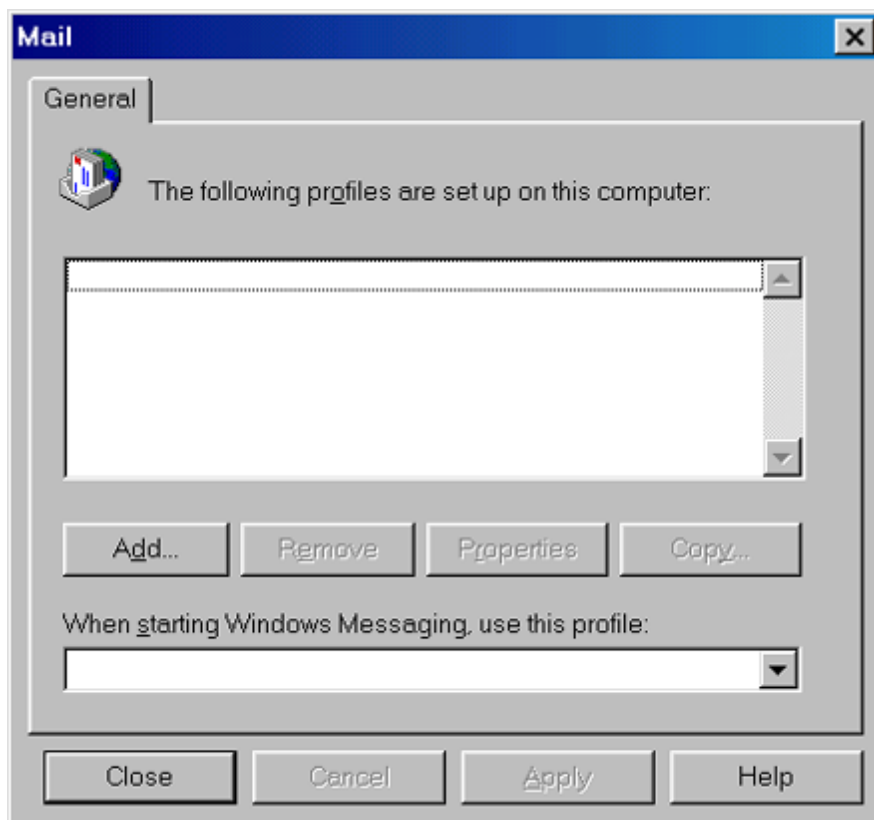
3.9 Installation note for Microsoft Fax

Follow the below steps before setup Microsoft Fax:

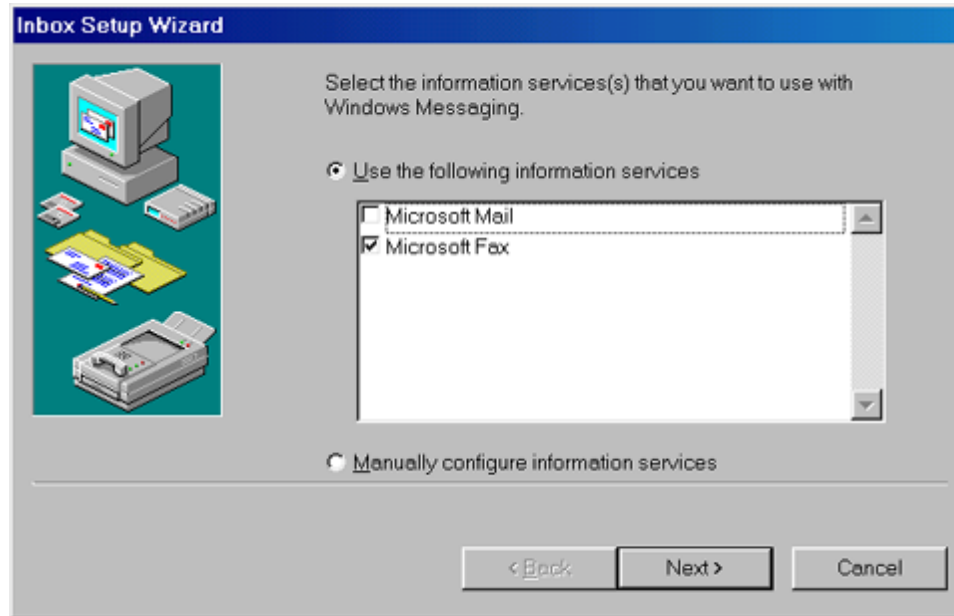
1. To make sure FaxComm+ ready.
2. Find the Windows98 original disk, and go into the directory \Tools\old Win95\message\US.
3. To install Windows Messaging via executing "wms" in above directory.
4. To install Microsoft Fax driver via executing "aw fax" in above directory.
5. Go to Start -> Setting -> Control Panel and execute "mail", you will find the screen as indication.

<Step01> Click

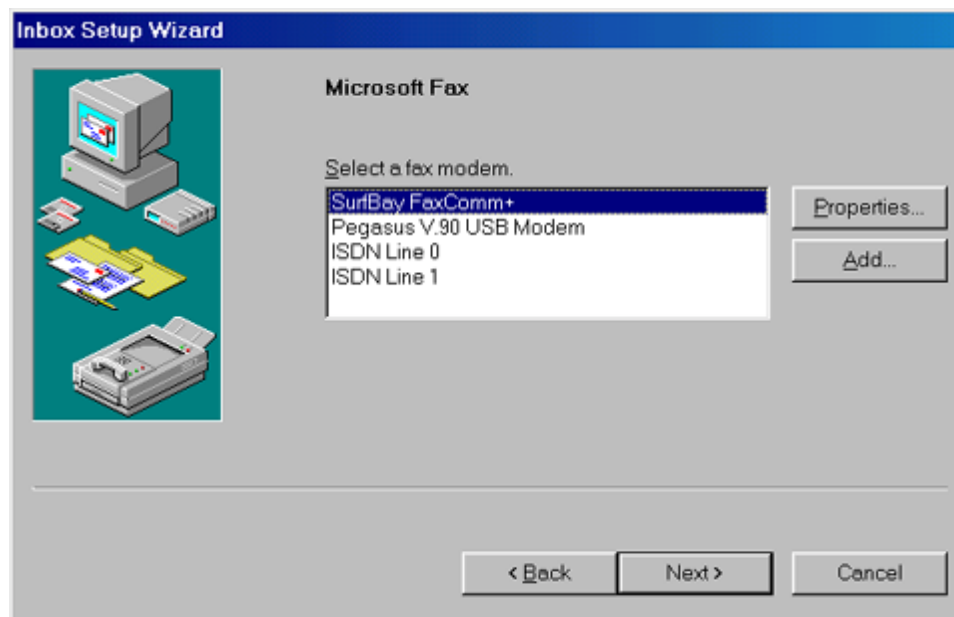
Add...

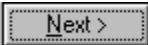


<Step02> Select "Microsoft Fax", then click 

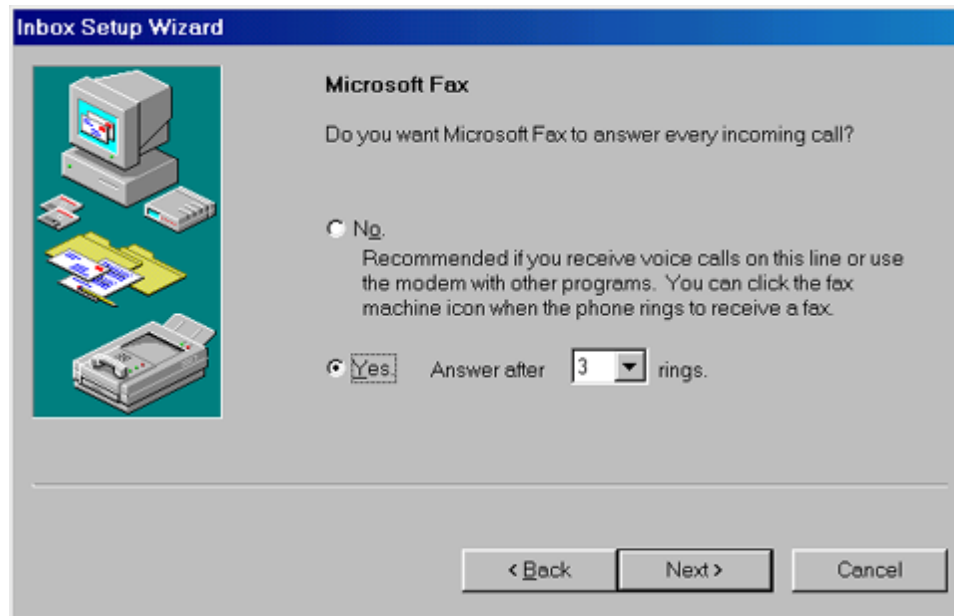



<Step03> Select "SurfBay FaxComm+", then click 

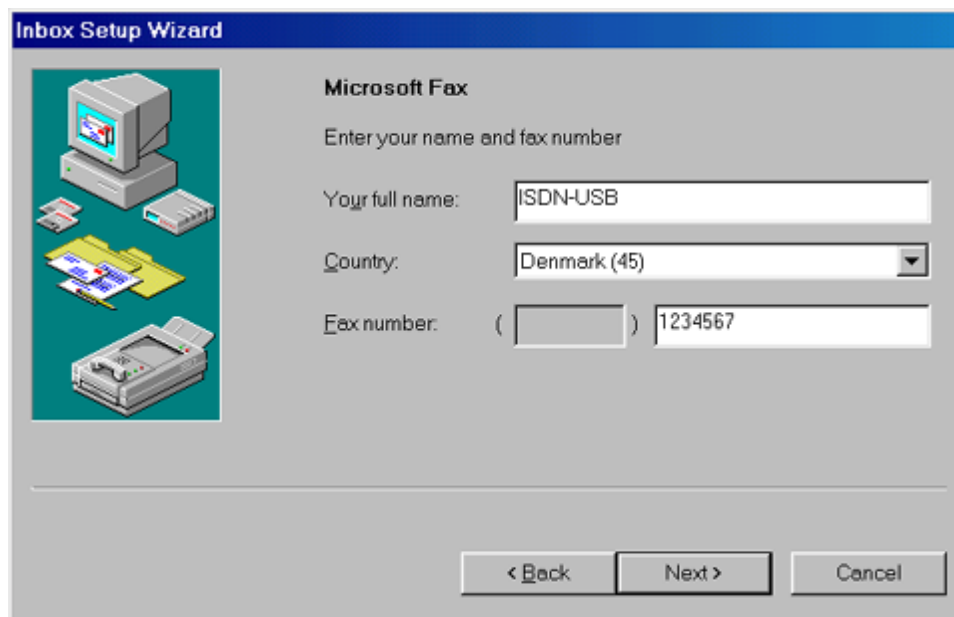


<Step04> Select "Yes" or "No", and click 

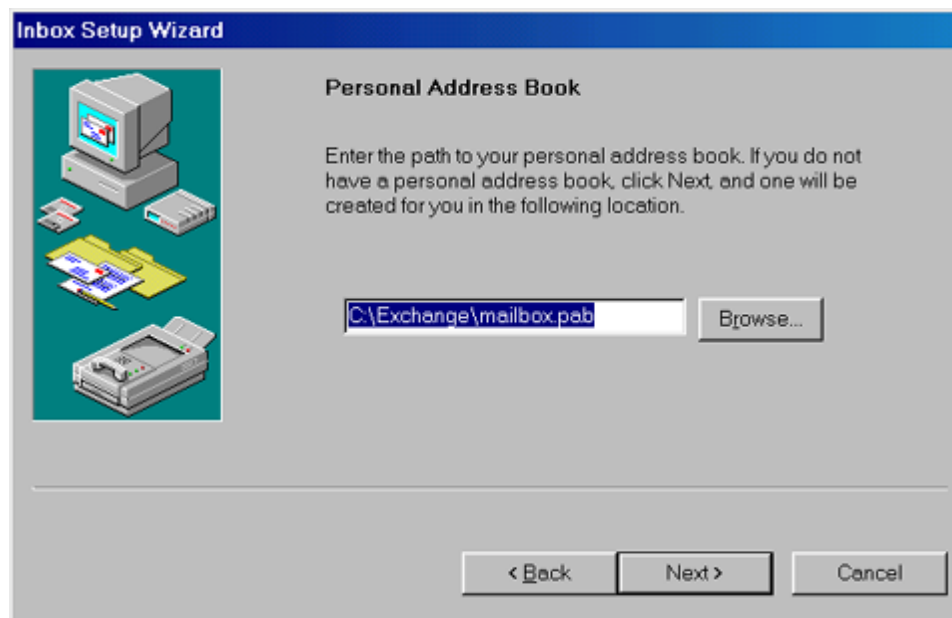
If you want to see the incoming fax later, you can go to "Inbox".



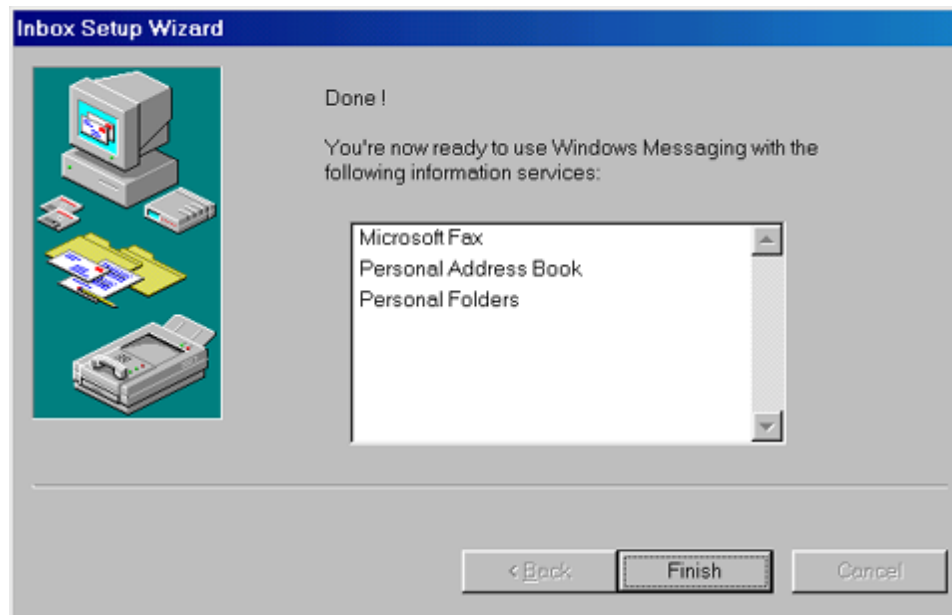
<Step05> Type your name and fax number, then click 



<Step06> Click 

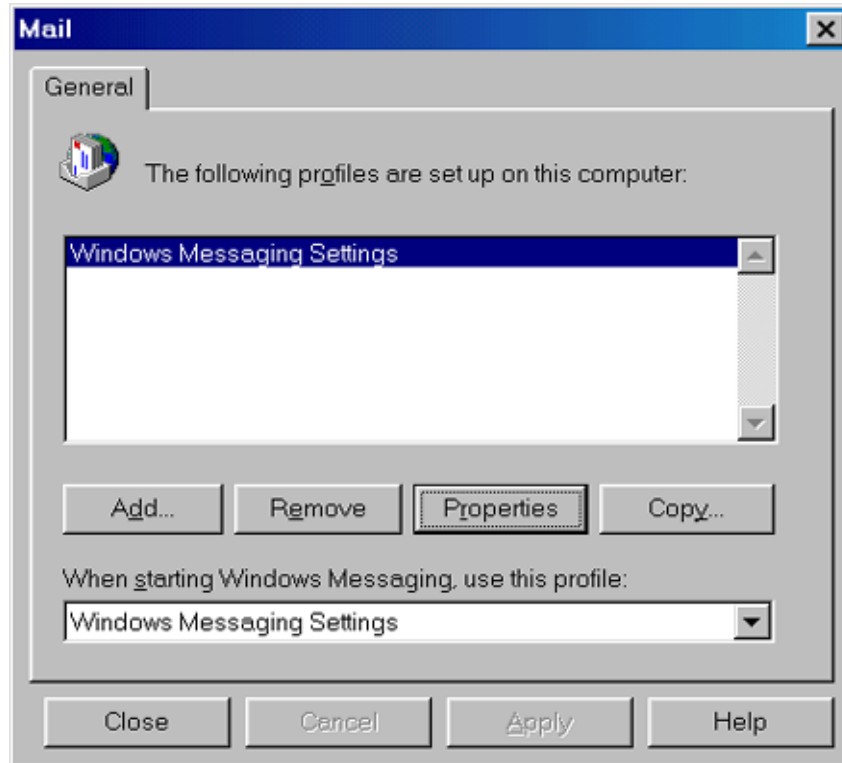


<Step07> Click 



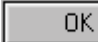
<Step08> Click

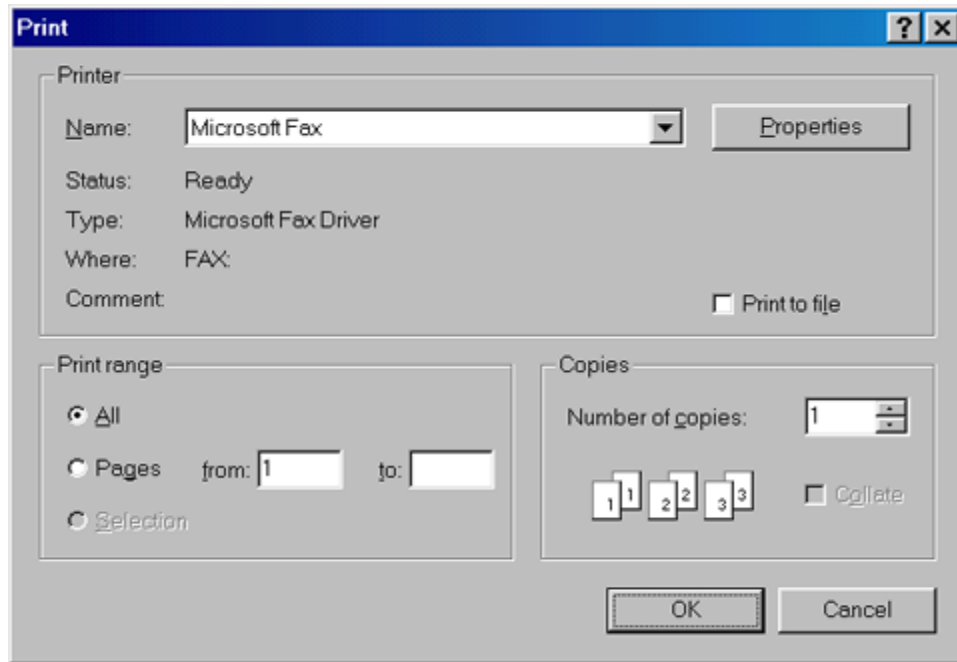
To compare step01 and step08, you will know it's already successful to add a "Messaging Setting".



How to send a fax with Microsoft Fax?

Just select "print" in any application software, you will see the screen as indication.

Select "Microsoft Fax", and click 



Where is the incoming fax for Microsoft Fax?

Just go to "Inbox", you will find it.

Declaration of CE

This declaration of conformity is according to article 7(3) and article 10(2)
of the Council of European Communities of 3 May 1989.

The protection requirements according the Council Directive article 4
and Annex III are kept.

MODEL / TYPE: ISDN-USB supporting one ISDN Basic rate interface

This declaration is given from the manufacturer

submitted by

CETECOM GmbH
Untertürkheimer Str. 6-10
D-66617 Saarbrücken
Germany

To the judgement of the products with regard to electromagnetic compatibility
according following regulations:

EN 55 022 Class B
EN 50 082 - 1 (IEC 801 Part 2,4 / ENV 50140 / ENV 50141)
EN 60950